

PaxOcean

A subsidiary of Kuok Singapore Limited, the PaxOcean Group comprises 5 shipyards strategically spread across 3 geographical locations.

PaxOcean operates :

1 shipyard in Singapore

1 shipyard in China

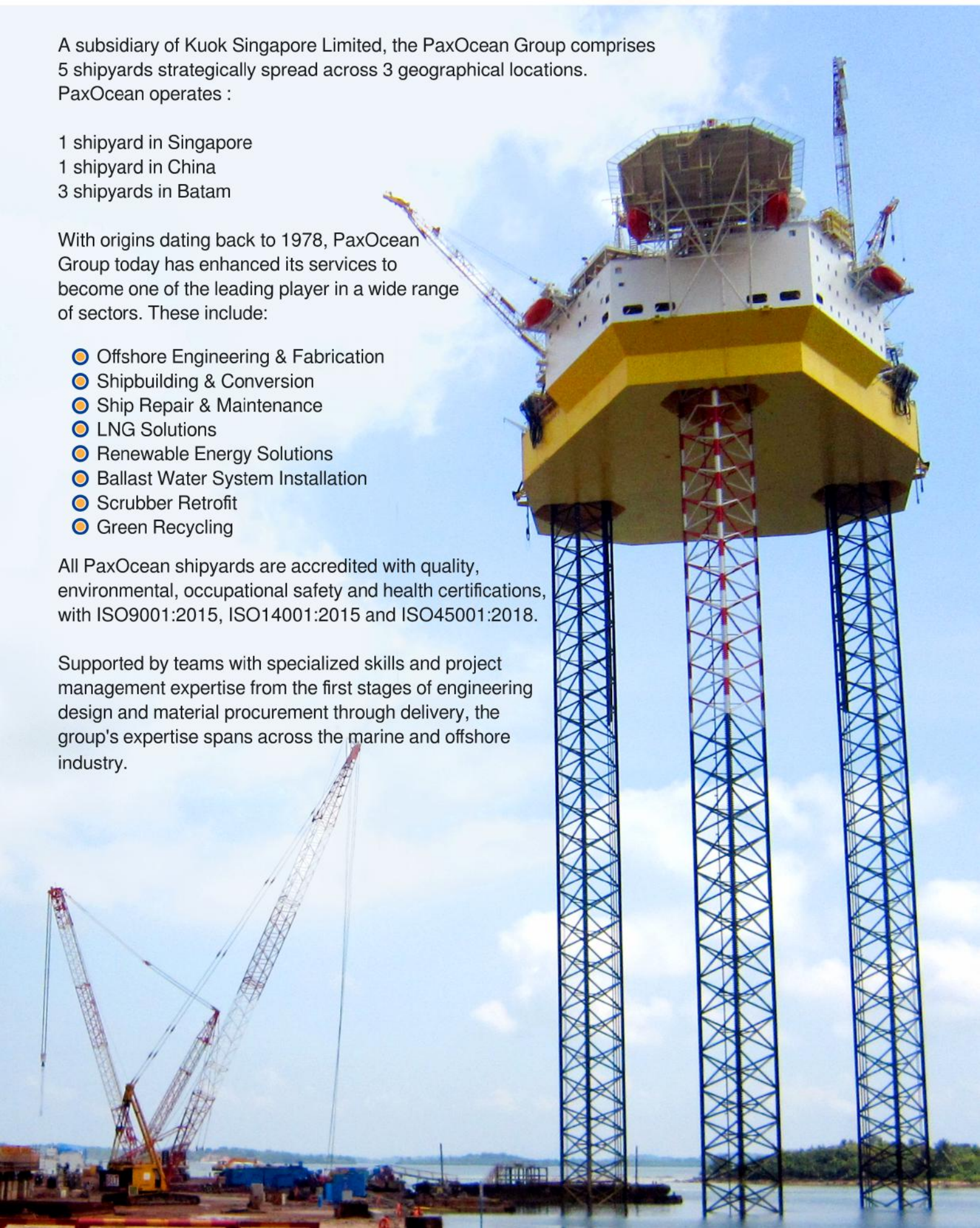
3 shipyards in Batam

With origins dating back to 1978, PaxOcean Group today has enhanced its services to become one of the leading player in a wide range of sectors. These include:

- Offshore Engineering & Fabrication
- Shipbuilding & Conversion
- Ship Repair & Maintenance
- LNG Solutions
- Renewable Energy Solutions
- Ballast Water System Installation
- Scrubber Retrofit
- Green Recycling

All PaxOcean shipyards are accredited with quality, environmental, occupational safety and health certifications, with ISO9001:2015, ISO14001:2015 and ISO45001:2018.

Supported by teams with specialized skills and project management expertise from the first stages of engineering design and material procurement through delivery, the group's expertise spans across the marine and offshore industry.





CENTRALIZED APPROACH

PaxOcean Group centralizes the strategic functions, from Marketing and Commercial, Procurement, Engineering and Technology Development, to corporate matters. In doing so, the Group has successfully optimized resources to drive growth of the five shipyards.

The centralized in-house Engineering division is capable of carrying out design engineering, detailed engineering and is a crucial factor in the yard's capability in carrying out high quality building and outfitting successfully.



PAXOCEAN SINGAPORE

PaxOcean Singapore yard is equipped with three floating docks of up to 187.5m x 36.5m and berthing space totalling 1,600m; capable of offering quick turnaround docking of up to Handymax-sized vessels and afloat repairs for up to Panamax-sized vessels.

With 3 building berths, PaxOcean Singapore yard offers a wide range of custom-design vessels to meet clients' needs, having successfully delivered a long track record of newbuilding vessels.





PAXOCEAN PERTAMA

PaxOcean Pertama is a premier ship repair and conversion yard in Batam, Indonesia that offers docking of Panamax-sized vessels and afloat repairs of VLCC-sized vessels to the marine and offshore sector.



PAXOCEAN GRAHA

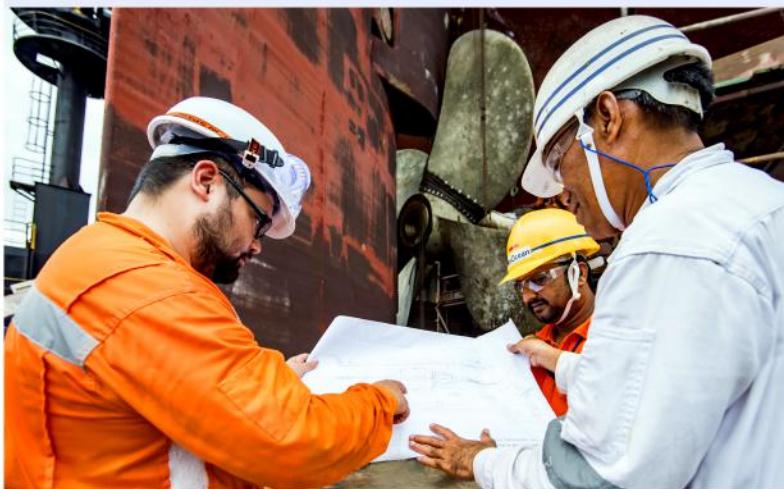
PaxOcean Graha is specialist rig and offshore construction yard with the ability to construct high specification jack-ups and liftboats. It successfully penetrated the high-technology rig construction market in 2009 to become the first facility of its kind in Indonesia.

Possessing the largest crawler crane available in Indonesia at 1,250T, Graha yard has the capability and resources to undertake turnkey projects for any offshore requirement. The current capacity is able to support the delivery of up to five rigs per year.

PAXOCEAN ZHOUSHAN

PaxOcean Zhoushan is well-equipped with two ultra-large graving docks, and a pier berth of 576m with 12m water depth and other supporting infrastructure.

The docks have been built to accommodate all types of ULCC, VLOC, Suezmax, FPSO and can accommodate vessels of up to 400,000 DWT and large container ships up to 16,000 TEUs.



PAXOCEAN NANINDAH

PaxOcean Nanindah specialises in construction of vessels supporting the offshore oil and gas market. Operating on 570,000m² of land with 15 building berths, the yard is capable of 15 concurrent newbuilding projects.

Since 2007, PaxOcean Nanindah has successfully completed construction of high-technology specialty vessels such as DP3 compact semi-submersibles, high specification platform supply vessels and freezer fishing trawlers.

RIG AND SHIP BUILDING



26,000m³ Floating Storage
Regasification Unit



5,000PS LNG
Dual-Fuel Tug



GustoMSC CJ46
Jack Up Drilling Rig



3,500 LT DWT
Product Oil Tanker



975 cbm Split Hopper Barge

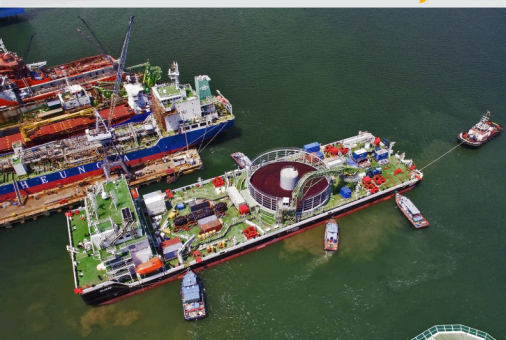


20,000TLC Floating Dock



84m DP3 Compact
Semi-submersible Offshore Vessel

CONVERSION, SHIP REPAIRS AND RETROFIT



Conversion from Flat Top Barge
to Cable Laying Barge



Conversion from Offshore Supply
Vessel to Water Injection Dredger



Conversion from Tanker
to FPSO



Repair and Retrofit of
Superyacht



Scrubber Retrofitting
for Bulk Carrier



Upgrading from
FSO to FPSO

PAXOCEAN GROUP

marketing@paxocean.com

www.paxocean.com

Tel: (65) 6551 5900

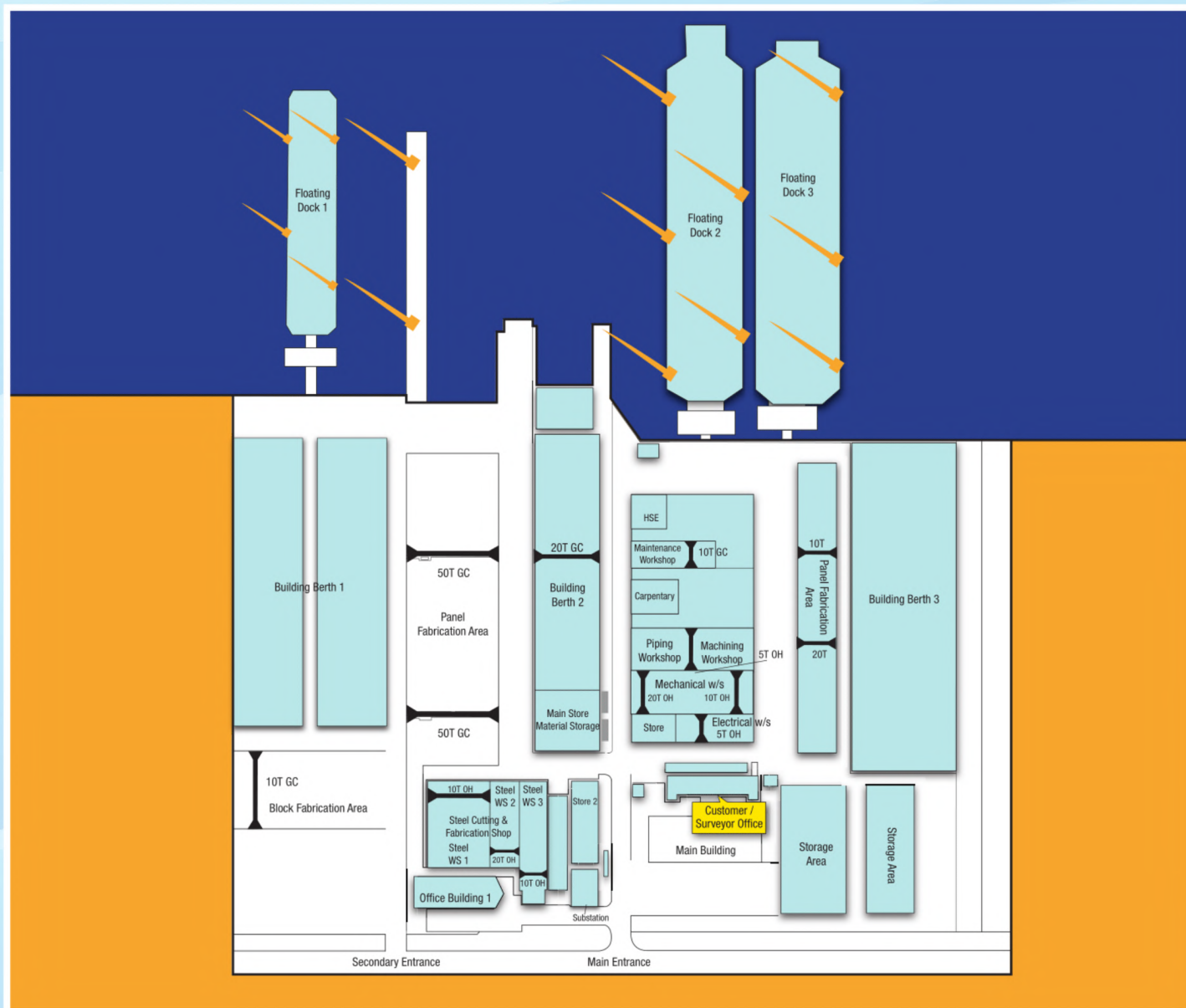
No. 1 Kim Seng Promenade, #07-02 Singapore 237994

TUAS YARD SINGAPORE



PaxOcean Singapore was established in 1983, and possess a strong track record of providing excellent and reliable services to global customer in shipbuilding, ship repair and conversion projects.

Backed by a strong and experienced team, the yard offer competitive and efficient retrofit solutions for scrubber and ballast water treatment system. Equipped with multiple floating docks and afloat repair berths, we are comitted to provide quality and on time delivery to meet customers' needs.



PAXOCEAN SINGAPORE

YARD FACILITIES (YARD SITE - 110,000 m²)

- | | |
|-------------------|--------------------------------------|
| ● Floating Dock 1 | 122.0m x 22.8m 3,400 TLC |
| ● Floating Dock 2 | 195.0m x 34.7m 16,000 TLC |
| ● Floating Dock 3 | 187.5m x 36.5m 16,000 TLC |
| ● Berthing Wharf | 900m |
| ● Building Berths | 3 sites for vessels up to 20,000 DWT |
| ● Cranes | up to 250 tons SWL |
| ● Overhead Cranes | up to 50 tons SWL in workshops |

PaxOcean Singapore

33 Tuas Crescent, Singapore 638722
T (65) 6551 5900 marketing@paxocean.com www.paxocean.com

PaxOcean

PERTAMA YARD

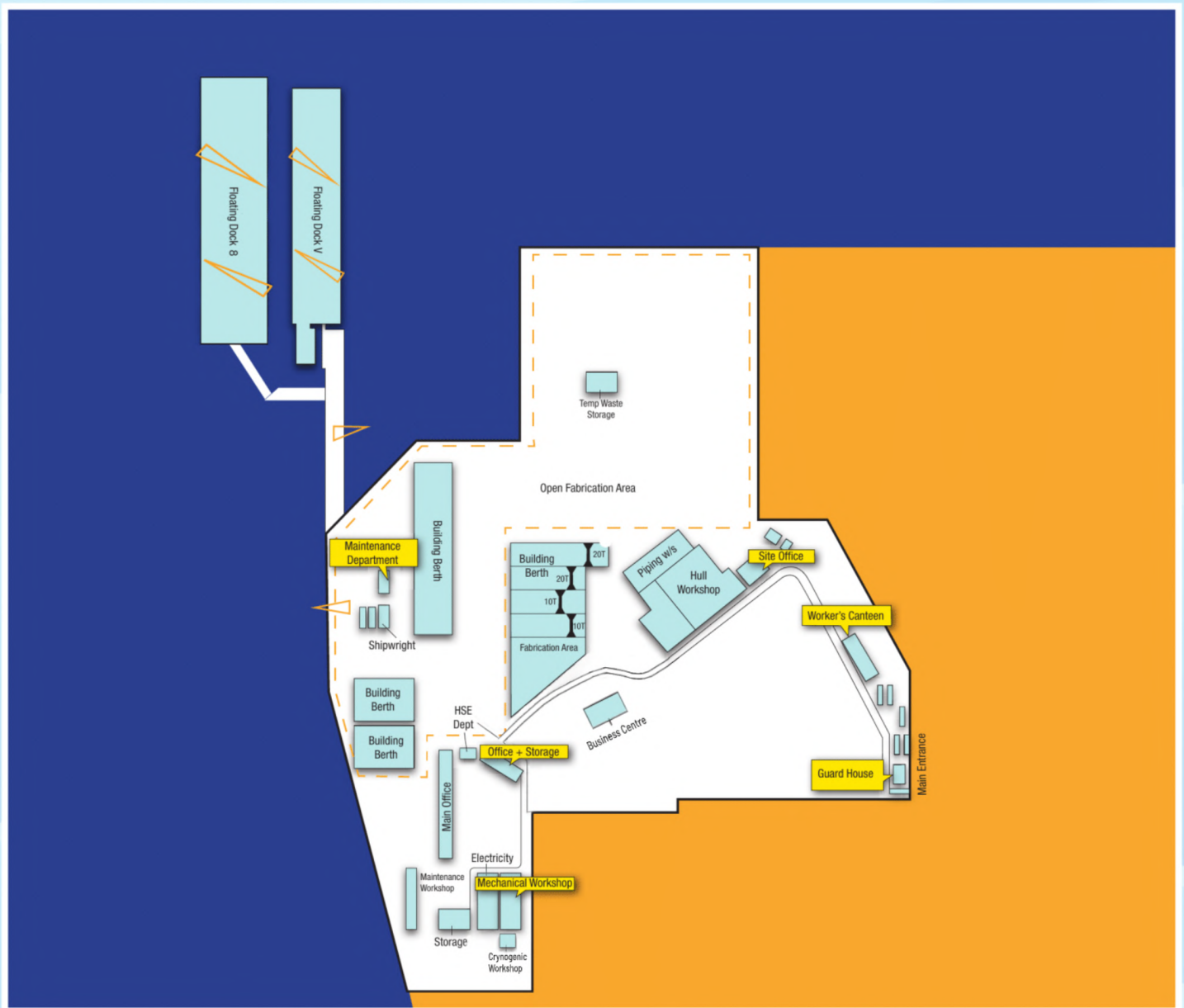
BATAM, INDONESIA



PaxOcean Pertama is an established shipyard in Batam, Indonesia providing timely and quality repairs and conversions for all vessel types.

Highly experienced in complex conversions of cement carriers, landing craft vessels, offshore heavy lift and accommodation barges. It is the preferred shipyard for docking and repair of marine and offshore vessels.

The newly acquired floating dock 8 is 300 meters long, 59 meters wide with 82,000 TLC, capable of accommodating vessels up to Suezmaxes category.



PAXOCEAN PERTAMA

YARD FACILITIES (YARD SITE - 280,000 m²)

● Floating Dock 8	300.0m x 59.0m 82,000 TLC
● Floating Dock V	235.0m x 40.0m 22,000 TLC
● Floating Dock II	186.0m x 36.4m 16,000 TLC
● Floating Dock I	97.0m x 24.0m 3,200 TLC
● Berthing Wharf	2,400m
● Building Berths	4 sites for vessels up to 30,000 DWT
● Cranes	up to 250 tons SWL
● Overhead Cranes	up to 20 tons SWL in workshops
● Plasma Cutting Machine	1 unit

PaxOcean Pertama

Jalan Brigjen Katamso, KM. 6, Tanjung Uncang, Batu Aji, Batam, Indonesia
T (62) 778 404 9000 marketing@paxocean.com www.paxocean.com

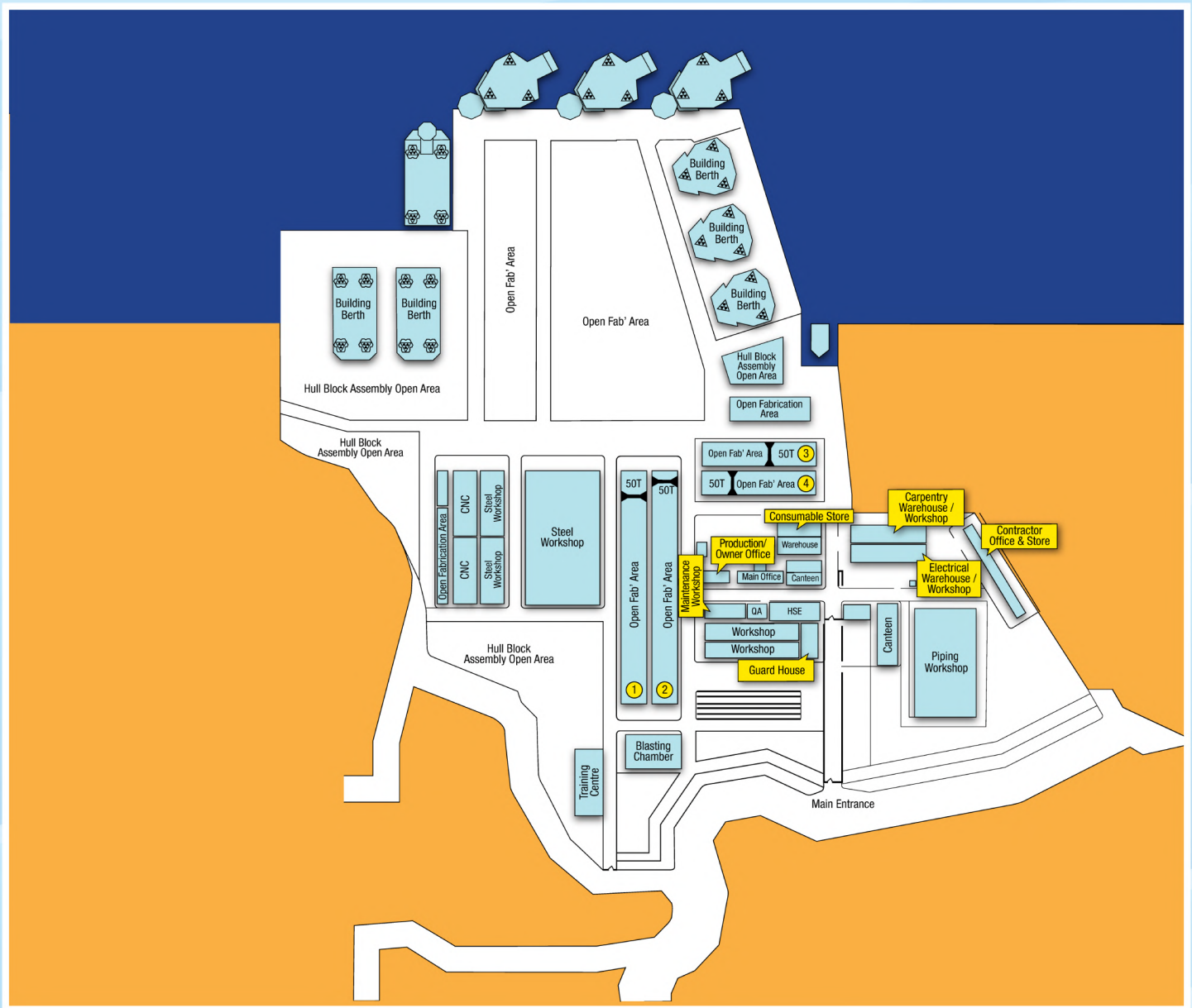
PaxOcean

GRAHA YARD BATAM, INDONESIA



PaxOcean Graha is a purpose-built rig and offshore construction yard situated in Batam, Indonesia. Possessing the largest 1,250T crawler crane, the yard has the capability and resources to undertake turnkey projects for newbuilds and high performance offshore units. Our portfolio of viable and cost-effective solutions include CJ46 design jack-up drilling rigs, self-elevating platforms and dual fuel tugs.

PaxOcean has stepped up its range of services by offering Green Recycling Program to Ship Owners. Our ship recycling facility in Batam complies with the requirement of EU Ship Recycling Regulation that adhere to the highest standard of environmental responsibility and worker protection. To date PaxOcean have successfully recycled Bulk Carrier, MOPU and Semi-submersible Rig.



PAXOCEAN GRAHA

YARD FACILITIES (YARD SITE - 520,000 m²)

- | | |
|---------------------------------------|-------------------------------------|
| ● Berthing Wharf | 990m |
| ● Building Berths | 3 nos 80m x 80m
2 nos 170m x 50m |
| ● Mobile Shelter Open Fab' Area 1 & 2 | L270m x W30mx 10m |
| ● Mobile Shelter Open Fab' Area 3 & 4 | L132m x W30mx 10m |
| ● Steel Fab Workshop | 26,000 m ² |
| ● Mechanical Workshop | 2,000 m ² |
| ● Electrical Workshop/Store | 7,300 m ² |
| ● Carpentry Workshop/Store | 1,300 m ² |
| ● Mobile Cranes | up to 1,250 tons SWL |
| ● Gantry Cranes | up to 50 tons SWL |
| ● Overhead Cranes | up to 40 tons SWL in workshop |
| ● Plasma Cutting Machines | 4 units |
| ● Plasma Pipe Cutting Machine | 1 unit |

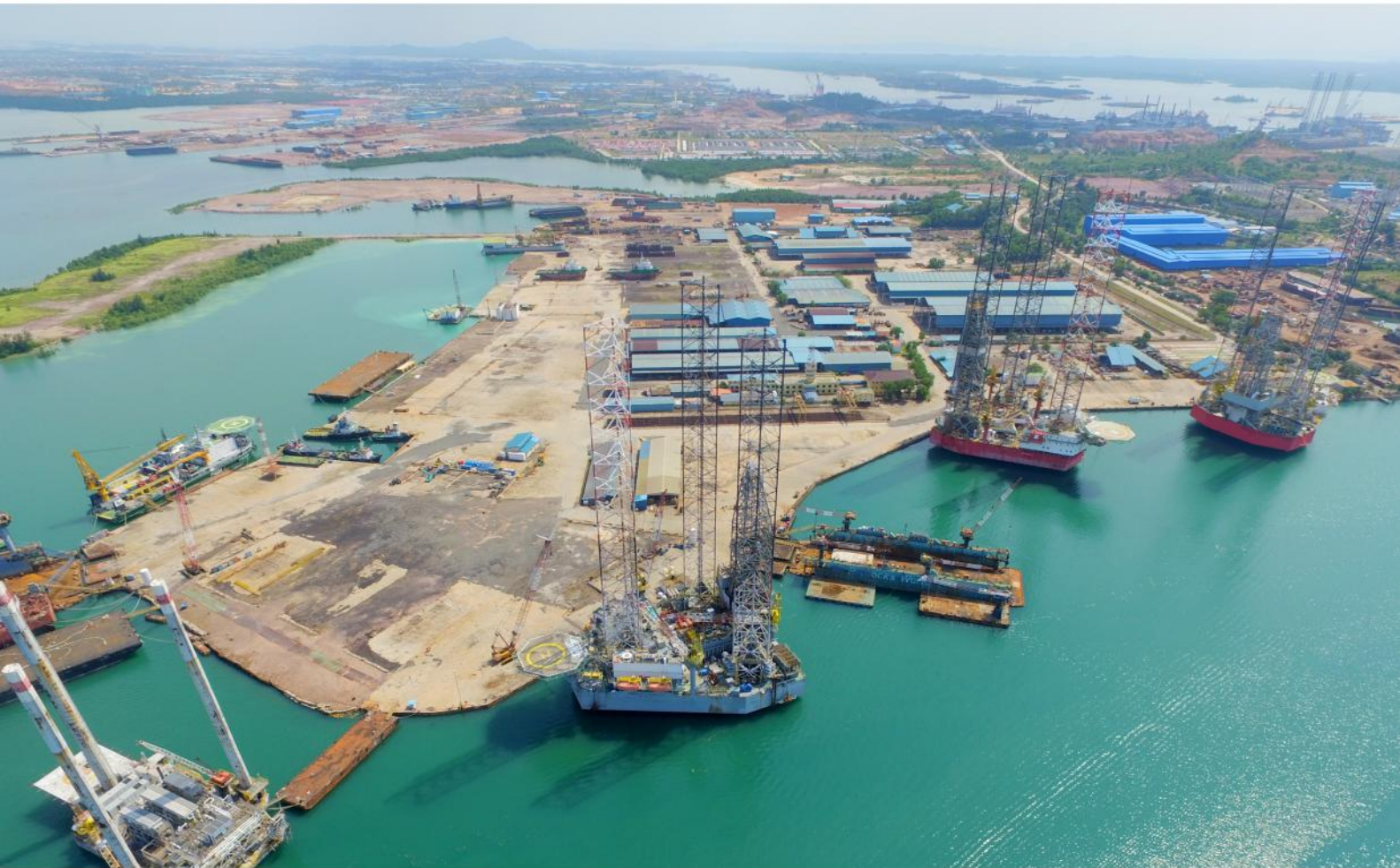
PaxOcean Graha

Jalan Brigjen Katamso KM.8, Tanjung Uncang, Batu Aji, Batam, Indonesia
T (62) 778 404 9000 marketing@paxocean.com www.paxocean.com

PaxOcean

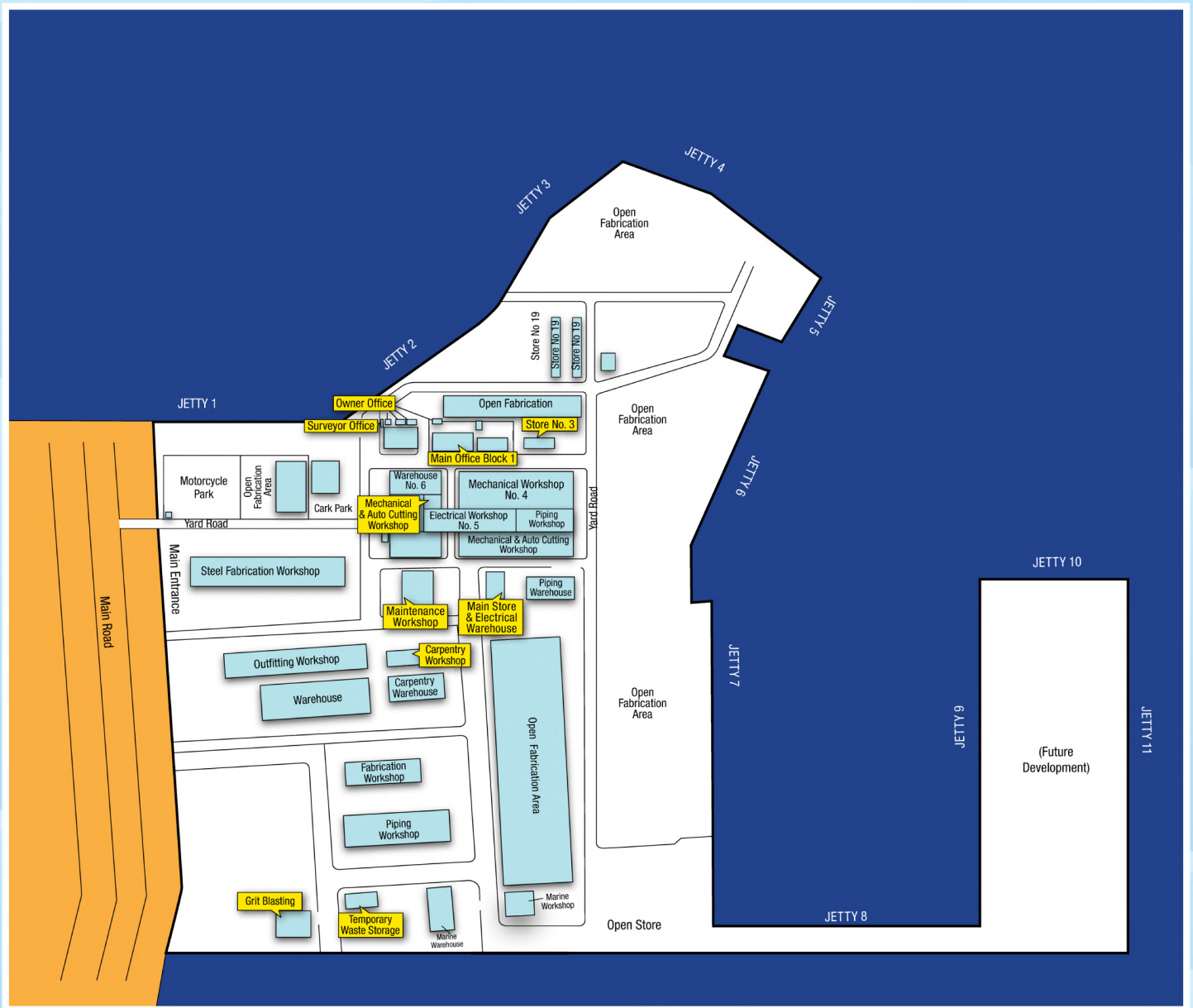
NANINDAH YARD

BATAM, INDONESIA



PaxOcean Nanindah is a leading yard situated in Batam, Indonesia for oil and gas, offshore and special projects.

The yard has the complete range of facilities to cater for construction and upgrading work. Operating on 570,000m² of land with 15 building berths, the yard is capable of executing 15 concurrent newbuilding projects.



PAXOCEAN NANINDAH

YARD FACILITIES (YARD SITE - 570,000 m²)

● Berthing Wharf	2,500 m
● Steel Fabrication Workshop	13,600 m ²
● Open Area Fabrication	22,000 m ² with Gantry Cranes
● Piping Workshop	6,600 m ²
● Electrical Workshop	2,100 m ²
● Carpentry Workshop	2,700 m ²
● Steel Forming Workshop	2,100 m ²
● Mechanical Workshop	4,800 m ²
● Warehouse	5,800 m ²
● Cranes	up to 600 tons SWL
● Generators	ranging from 10 kVA to 1,000 kVA
● Air Compressors	ranging from 50 cfm to 930 cfm

PaxOcean Nanindah

Jalan Brigjen Katamso (Bundaran), Tanjung Uncang, Batu Aji, Batam, Indonesia
T (62) 778 404 9000 marketing@paxocean.com www.paxocean.com

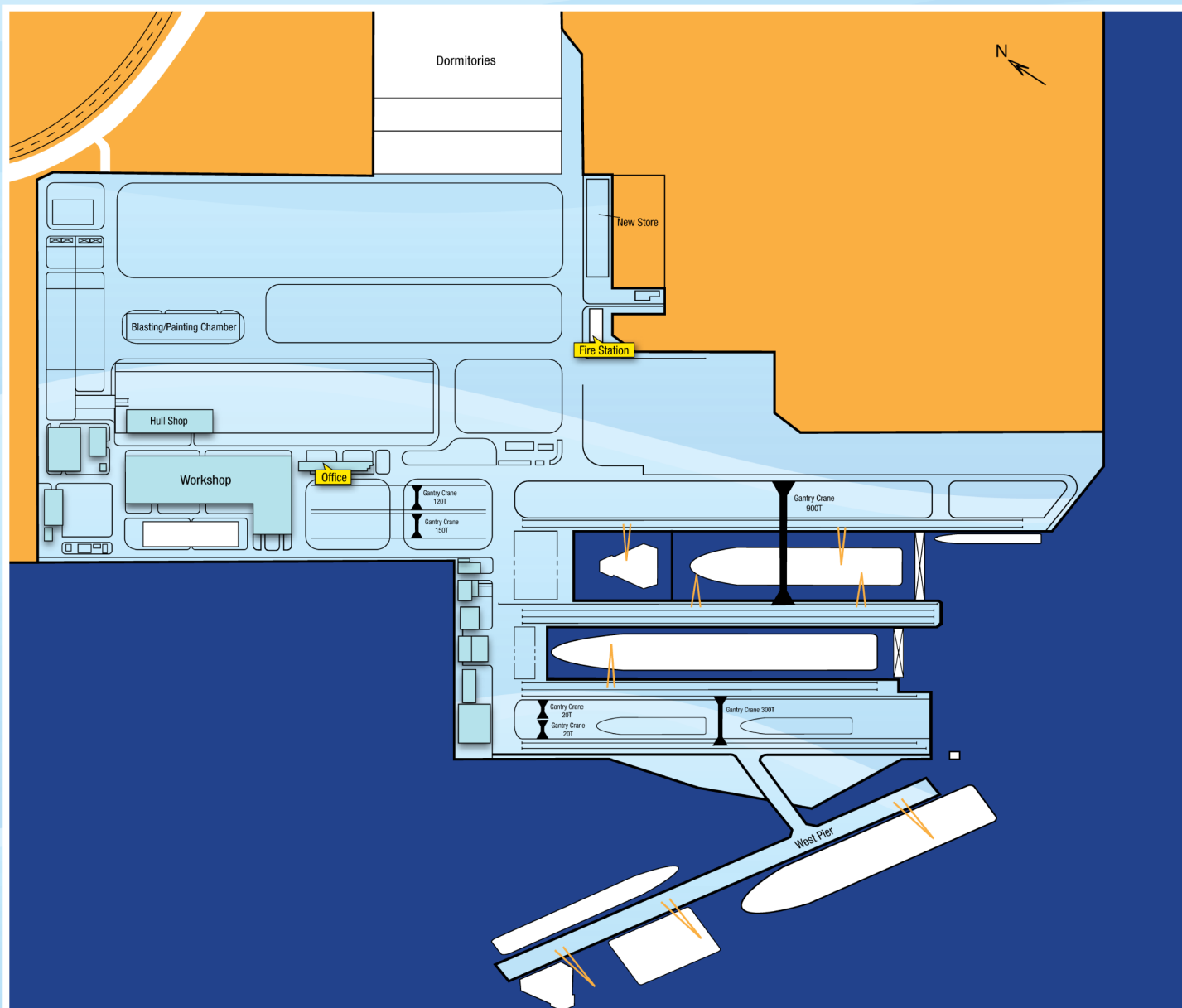
PaxOcean

ZHOUSHAN YARD CHINA



PaxOcean Zhoushan has one of the largest graving docks in the region. Since the yard began its operations in 2010, it has developed a strong track record of providing quality and on time services to our global customers in rig and ship repair, conversion and newbuilding projects.

The shipyard was developed to accommodate vessels of over 400,000 DWT, including the large container vessels of up to 16,000 TEU. We offer customised turnkey solutions for the installation of Exhaust Gas Cleaning System (EGCS) and Ballast Water Treatment System (BWTS).



PAXOCEAN ZHOUSHAN

YARD FACILITIES (YARD SITE - 800,000 m²)

- | | |
|---------------------------------|---|
| ● Newbuilding Slipway | 340m x 70m |
| ● No.1 Dock | 400m x 106m graving dock with 13.7m draft |
| ● No.2 Dock | 380m x 80m graving dock with 13.7m draft |
| ● West Pier | 576m with 12m draft |
| ● Erection / Assembly | 95,000 m ² |
| ● Workshops | 16,000 m ² |
| ● Blasting/painting Chamber | Chamber for blasting and painting. |
| ● Cranage and Lifting Equipment | 1 x 100T, 3 x 45T, 1 x 40T luffing cranes for No.1 and No.2 docks
1 x 50T, 1 x 40T, 1 x 32T luffing cranes for outfitting Pier
1 x 900T, 1 x 300T, 1 x 150T, 1 x 120T, 2 x 20T gantry cranes
1 x 275T, 1 x 100T, 3 x 50T, 1 x 125T mobile cranes
2 x 320T lowloader |

PaxOcean Zhoushan

No. 1 Offshore Road, Changbai, XiaoSha Sub-District, Dinghai District, Zhoushan City,
Zhejiang Province, The People's Republic of China 316057
T (86) 580 8751820 marketing@paxocean.com www.paxocean.com

PaxOcean