

Corporate Presentation

Q2 2022



PaxOcean

Our Parentage

PaxOcean



KUOK GROUP

Properties

KERRY PROPERTIES



SHANG
PROPERTIES

Logistics



Kerry Logistics
Network

Hospitality



SHANGRI-LA GROUP

Food & Agribusiness



Others



Kuok (Singapore) Limited

Maritime

PaxOcean



Excellence Through Safety



Digital Infrastructure



K2 DATA CENTRES

Property



ALLGREEN

Agri-solutions

agrifert
MALAYSIA

Our Mission, Vision & Values



- We aspire to become a world-class service provider in the construction, conversion and repair of marine and offshore assets.



- We aim to develop a committed, competent and cohesive workforce, centred around our core values.

➤ GRATITUDE

We are thankful for the challenges we go through, that make us stronger, wiser and humble as a team.
We show our appreciation to others for their support and contribution to our success.

➤ INTEGRITY

We relate to others with sincerity, honesty, truthfulness and benevolence.
We treat everyone fairly regardless of seniority and background.

➤ EFFORT

We are committed to the organisation and work diligently to achieve success.
We stay resilient, hold ourselves accountable and always give of our best.

➤ UNITY

We embrace differing views to reach the best way forward.
We strive together for a common purpose and execute collectively.

➤ COMPASSION

We care and look after the well being of our people and the community.
We take responsibility for the safety and well-being of all.

Core Activities

PaxOcean



Shipbuilding & Offshore Fabrication

PaxOcean has successfully built over 600 vessels across most major vessel classes. With our state-of-the-art facilities and deep expertise, we deliver large-scale, innovative solutions for the marine and energy sectors.



Conversions & Retrofits

Strong track record in delivering innovative and cost-effective fast-track conversions. We offer turnkey solutions for the installation of Ballast Water Treatment Systems and Scrubber systems on board.



Repairs & Maintenance

We have the competence to safely and quickly complete the full range of repair and modification work for all types of vessels, from routine to complex repair jobs.



Decommissioning & Green Recycling

In accordance with European Union Ship Recycling Regulations, our ship recycling facility in Batam demonstrate our commitment to safe and environmentally sound practices at the end of a ship's life.



Integrated Solutions

With our strong track record in design, engineering and execution, PaxOcean is well-positioned to provide a suite of integrated energy solutions that can support the energy transition and sustainable development.

Key Milestones



PaxOcean Zhoushan started operation and welcomed first Jack Up COSL 942 for drydocking

2011



Rebranding of all shipyards as the PaxOcean Group

2012

Acquisition of 67% of DDW SEA and renamed DDW-PaxOcean Asia



2014

Delivery of 26,000m³ FSRU in PaxOcean Zhoushan



2018

PaxOcean Holdings acquired 100% shares of DDW PaxOcean Asia and renamed as PaxOcean International

2019

Won contract to construct a self-elevating platform with 1,600T lift for offshore wind



2020

Installation of Rotor Sails in Zhoushan Yard (First Installation in China)

Relinquishing of Zhuhai Yard as part of strategic business plan

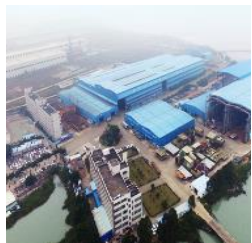


2021

Launch of the Coastal Sustainability Alliance to build next-generation maritime ecosystem



2022



2007

PaxOcean acquired first yard through a JV in Guangdong

PaxOcean Group of Shipyards

PaxOcean



Tuas, Singapore
Total Area: 110,000m²



Zhoushan, China
Total Area: 800,000m²



Pertama Batam
Total Area: 272,000m²



Graha Batam
Total Area: 495,000m²



Nanindah Batam
Total Area: 546,000m²

PaxOcean Group of Shipyards



Tuas, Singapore

Total Area: 110,000 m²

Docking up to Handymax-Sized
Afloat repairs up to Panamax-Sized

Dock	Length	Width	TLC
No. 1	122 M	22 M	3,400
No. 2	195 M	34 M	16,000
No. 3	187 M	36 M	16,000



Zhoushan, China

Total Area: 800,000 m²

Dock	Length	Width
Central	400 M	106 M
West	380 M	80 M

PaxOcean Group of Shipyards



Pertama, Batam

Total Area: 272,000 m²

Dock	Length	Width	TLC
No. 1	97 M	24 M	3,200
No. 2	186 M	36 M	16,000
Dock V	235 M	40 M	22,000
Dock 8	300 M	59 M	82,000

Docking up to Capesized Vessels Afloat
repairs up to VLCC-Sized



Graha, Batam

Total Area: 495,000 m²

Building Berths	3 nos. 80 M x 80 M 2 nos. 170 M x 50 M
Berth	455 M
Equipment	Cranes up to 1,250 T SWL



Nanindah, Batam

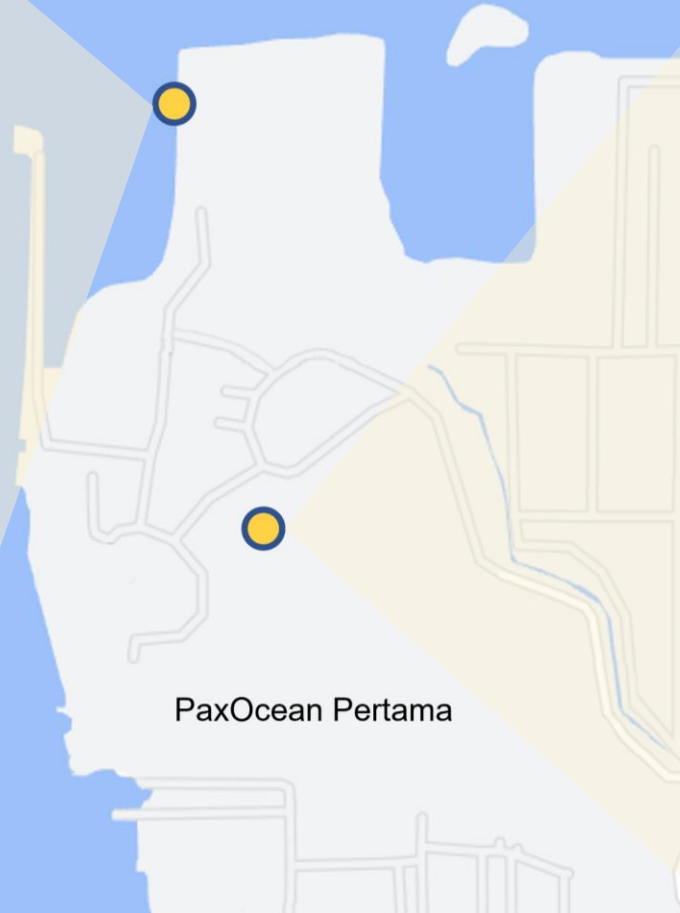
Total Area: 546,000 m²

Building Berths	2,500 M waterfront with up to 5m water depth
Working Area	31,900 M ²
Equipment	Cranes up to 600 T SWL

PaxOcean Batam Development Plan

300m Berthing

- Completed Q4 2021



PaxOcean Business Center

The three-storey building offers our clients a variety of communal spaces for working and socializing.

- Completion Q4 2022



Newbuilding Track Record

PaxOcean



Vessel Type

FSRU

Dual Fuel LNG Tug

Platform / Offshore Supply Vessel

Cable Laying Vessel

Chemical / Product Tanker

Container Vessel / Carrier

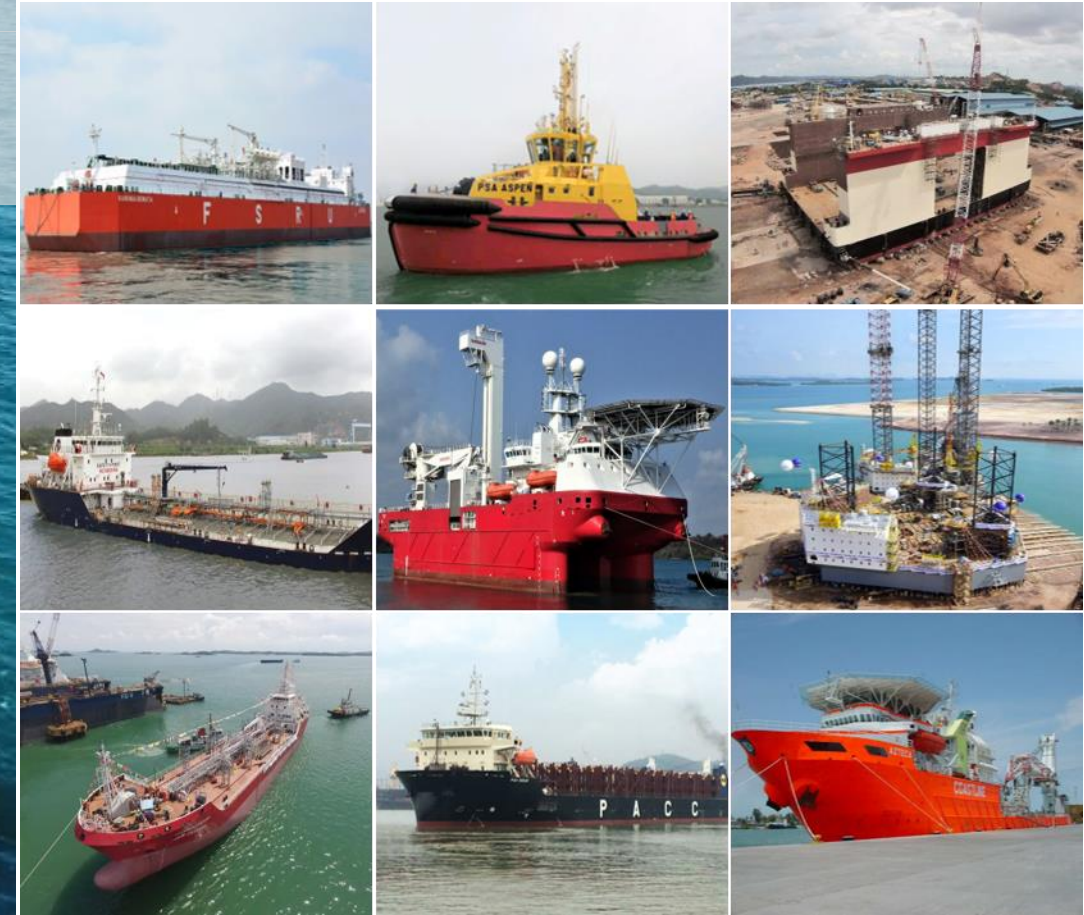
Split Hopper Vessel / Dredger

Caisson / Floating Dock

750 Vessels and Barges

Across major vessel classes, including

15 Jack up Rigs and Liftboats



Conversions Track Record

PaxOcean

Successfully Delivered
51 Conversions



Conversion from
Offshore Supply Vessel to
Water Injection Dredger



Ship Repair Track Record

PaxOcean

Gas Carrier



Chemical/Product Tankers



Bulkers/Container Vessel



OSV/Tug



White Boats

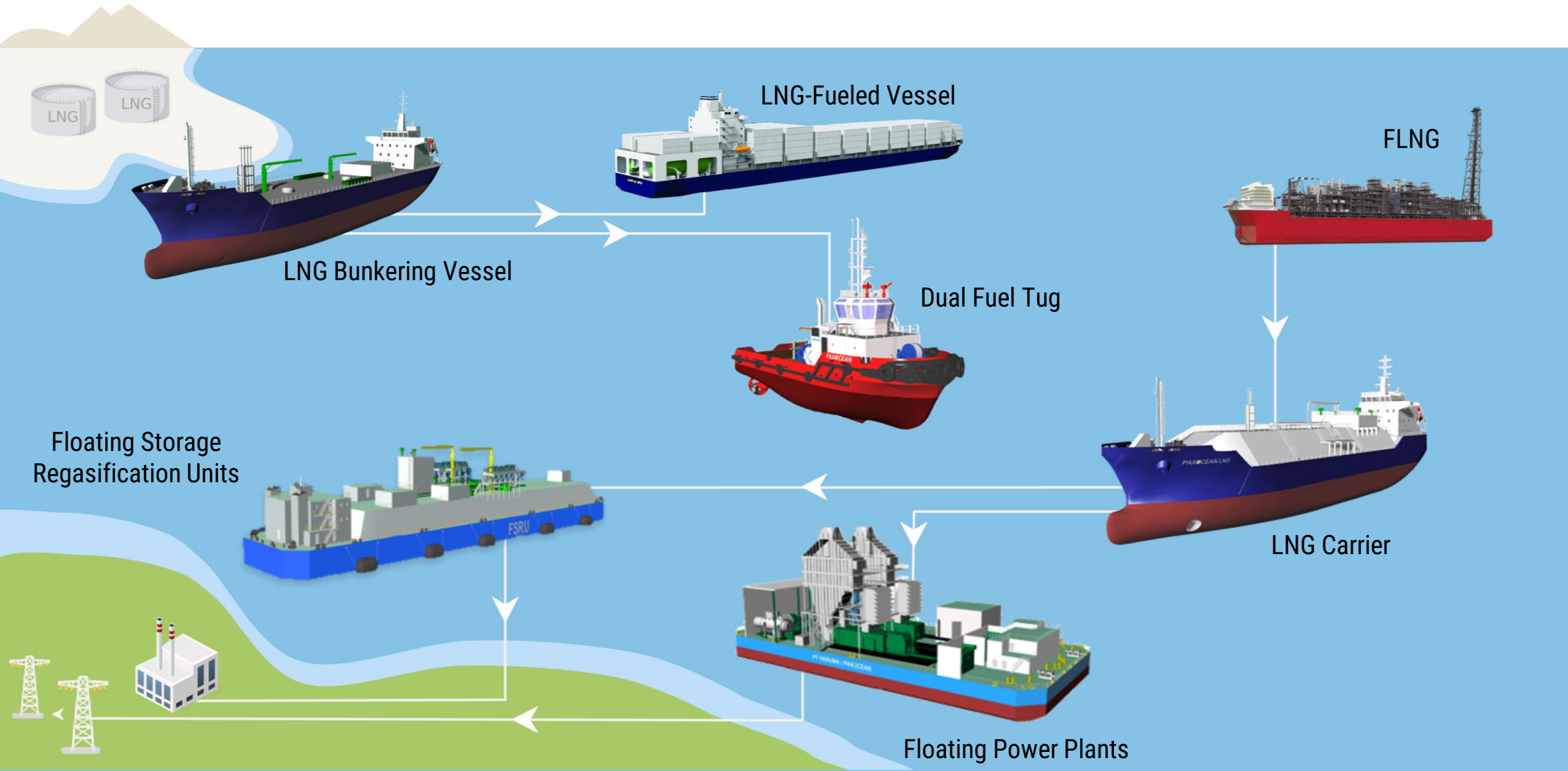


Others



LNG Supply Chain

PaxOcean



Clean Energy Solutions - LNG

Design, develop and integrate solutions across the value chain

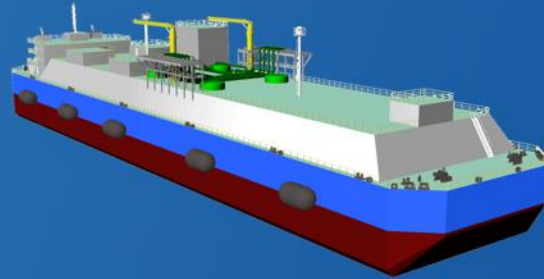
PaxOcean



GAS TO POWER

Floating Power Barge

Economic and environment friendly power barges that provide fast and direct supply of electricity to remote communities.



LIQUID TO GAS

Floating, Storage, Regasification Unit



Built to PaxOcean's design, the 26,000m³ FSRU is currently operating in Benoa, Bali



TRANSPORTATION

LNG Bunker/Carrier

Our designs for carrier/bunker vessels range from 1,500m³ to 30,000m³ capacity, able to provide flexible and optimal LNG transport options.



GAS AS FUEL

Dual-Fuel LNG Tug



Delivered Indonesia's first Dual-Fuel LNG Tug, built to PaxOcean's design.

Renewable Energy Solutions – Offshore Wind

PaxOcean

Heavy Lift Crane Vessel

Offshore transport and installation



Turbine Installation Vessel

Offshore transport and installation



Cable Laying Vessel

Offshore wind cable laying



Service Operation Vessels (SOVs)

Offshore support and maintenance



BALLAST WATER MANAGEMENT SYSTEM

- Comprehensive & Cost-Effective Solutions
- Type-approved, IMO & USCG-compliant
- Proven Track Record in Performing BWTS Retrofit for diverse range of vessel types.



15 DAYS SCRUBBER RETROFIT
83,476 DWT Bulk Carrier

Scope of Work

- 3D Scanning & Vessel Survey
- Basic & Detailed Engineering
- Procurement & Prefabrication
- Project Management
- Installation
- Commissioning/Testing

Green Ship Recycling – Track Record



◀ 22,000 Ton Semi Sub Drilling Rig
"Noble Dave Beard"

11,000 Bulk Carrier ▶
"Acacia"



◀ 4,000 Ton
Mobile Offshore Production Unit
"EP 3"

6,500 Ton ▶
Mobile Offshore Production Unit
"EP 4"



Green Ship Recycling - Certification



STATEMENT OF FACT

This is to state that our assessment of the facilities at the PAXOCEAN Shipyard

PT Dok Warisan Pertama
Jl. Brigjen Katamso, Tanjung Uncang,
Batam, Indonesia

indicates that it has the capabilities, and the Ship Repair, Ship Conversion and Ship Recycling Work practices, to comply with the requirements of the following regulations

- MEPC 210 (63) 2012 GUIDELINES FOR SAFE AND ENVIRONMENTALLY SOUND SHIP RECYCLING
- REGULATION (EU) No 1257/2013 OF THE EUROPEAN PARLIAMENT AND OF THE COUNCIL of 20 November 2013 on ship recycling and amending Regulation (EC) No 1013/2006 and Directive 2009/16/EC

Date of Issue: 9th September 2019



WENKUI CAI
Manager

This certificate or report is granted or issued subject to the condition that it is understood and agreed that nothing herein shall be deemed to relieve any designer, manufacturer, seller, supplier, repairer or operator of any warranty, express or implied and ABS Consulting liability shall be limited to the acts and omissions of its employees, agents, and subcontractors. Under no circumstance whatsoever shall ABS Consulting be liable for any injury or damage to any person or property occurring by reason of negligent operation, misuse of or any defect in materials, machinery, equipment or other items other than defective items actually inspected by ABS Consulting and/or liability normally accepted loading standards, or defects reflected in documents reviewed by ABS Consulting and which are covered by this certificate or report.

ABS Consulting (S) Pte Ltd • 438 Alexandra Road, #09-01 Alexandra Point • Singapore 119936
Tel: 65-6279 8933 • Fax: 65-6270 9587 • www.absconsulting.com



STATEMENT OF FACT

This is to state that our assessment of the facilities at the PAXOCEAN Shipyard

P.T. Graha Trisaka Industri
Jl. Brigjen Katamso, Tanjung Uncang,
Batam
Indonesia

Indicates that it has the capabilities, and the Ship Repair, Ship Conversion and Ship Recycling Work practices, to comply with the requirements of the following regulations

- MEPC 210 (63) 2012 GUIDELINES FOR SAFE AND ENVIRONMENTALLY SOUND SHIP RECYCLING
- REGULATION (EU) No 1257/2013 OF THE EUROPEAN PARLIAMENT AND OF THE COUNCIL of 20 November 2013 on ship recycling and amending Regulation (EC) No 1013/2006 and Directive 2009/16/EC

Date of Issue: 16th September 2020



WENKUI CAI
Manager

This certificate or report is granted or issued subject to the condition that it is understood and agreed that nothing herein shall be deemed to relieve any designer, manufacturer, seller, supplier, repairer or operator of any warranty, express or implied and ABS Consulting liability shall be limited to the acts and omissions of its employees, agents, and subcontractors. Under no circumstance whatsoever shall ABS Consulting be liable for any injury or damage to any person or property occurring by reason of negligent operation, misuse of or any defect in materials, machinery, equipment or other items other than defective items actually inspected by ABS Consulting and/or liability normally accepted loading standards, or defects reflected in documents reviewed by ABS Consulting and which are covered by this certificate or report.

ABS Consulting (S) Pte Ltd • 438 Alexandra Road, #09-01 Alexandra Point • Singapore 119936
Tel: 65-6279 8933 • Fax: 65-6270 9587 • www.absconsulting.com



STATEMENT OF FACT

This is to state that our assessment of the facilities at the PAXOCEAN Shipyard

P.T. Nanindah Mutiara Shipyard
Jl. Brigjen Katamso, Tanjung Uncang,
Batam
Indonesia

Indicates that it has the capabilities, and the Ship Repair, Ship Conversion and Ship Recycling Work practices, to comply with the requirements of the following regulations

- MEPC 210 (63) 2012 GUIDELINES FOR SAFE AND ENVIRONMENTALLY SOUND SHIP RECYCLING
- REGULATION (EU) No 1257/2013 OF THE EUROPEAN PARLIAMENT AND OF THE COUNCIL of 20 November 2013 on ship recycling and amending Regulation (EC) No 1013/2006 and Directive 2009/16/EC

Date of Issue: 21st September 2020



WENKUI CAI
Manager

This certificate or report is granted or issued subject to the condition that it is understood and agreed that nothing herein shall be deemed to relieve any designer, manufacturer, seller, supplier, repairer or operator of any warranty, express or implied and ABS Consulting liability shall be limited to the acts and omissions of its employees, agents, and subcontractors. Under no circumstance whatsoever shall ABS Consulting be liable for any injury or damage to any person or property occurring by reason of negligent operation, misuse of or any defect in materials, machinery, equipment or other items other than defective items actually inspected by ABS Consulting and/or liability normally accepted loading standards, or defects reflected in documents reviewed by ABS Consulting and which are covered by this certificate or report.

ABS Consulting (S) Pte Ltd • 438 Alexandra Road, #09-01 Alexandra Point • Singapore 119936
Tel: 65-6279 8933 • Fax: 65-6270 9587 • www.absconsulting.com

Coastal Sustainability Solution

Key targets and benefits of creating Singapore's

Coastal Sustainability Ecosystem

by Coastal Sustainability Alliance (CSA)



Green Supply Chain Resilience
Build comprehensive supply chain, charging infrastructure and capabilities with SMEs.



PXO Vessel and Platform Series
Design, build and deploy 10 PXO vessels by 2025. Vessels to achieve up to 50% reduction in carbon emissions.



Electric Charging
Charge PXO vessels through a network of shore and mobile e-charging points.



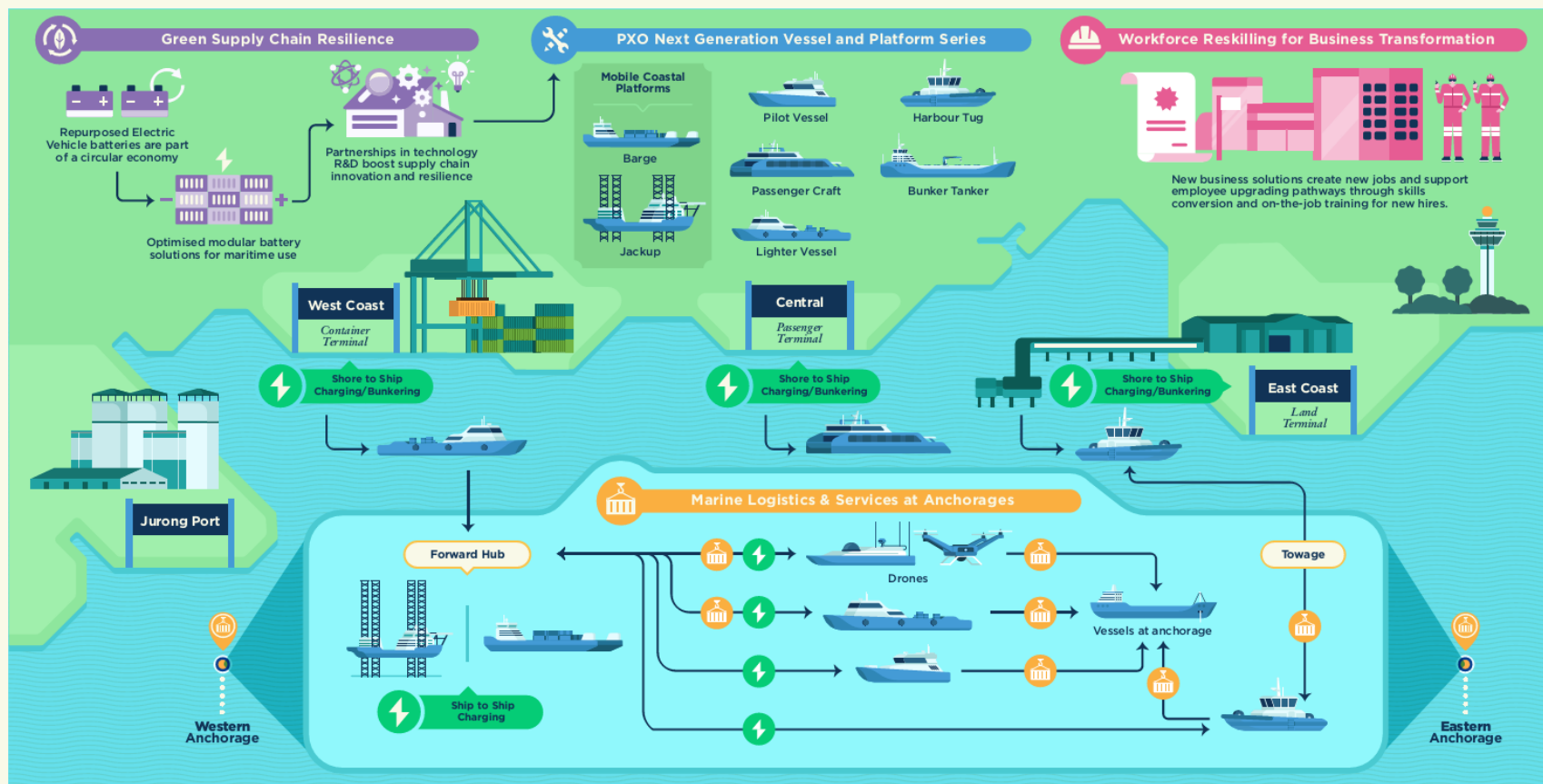
Workforce Reskilling for Business Transformation

Reskill, redeploy employees in enhanced job roles to support new business growth areas.



Marine Logistics & Services

Reduce marine traffic by 20% through fleet optimisation, floating platforms in anchorage and drones for last-mile deliveries.



The **Coastal Sustainability Alliance (CSA)** aims to build a next-generation maritime ecosystem to decarbonise, electrify and transform Singapore's maritime industry towards a circular economy. The ecosystem comprises electric vessels, shore and marine charging platforms, battery repurposing, renewable energy sources, energy-efficient logistics and innovative engineering solutions for future growth opportunities.

PX0 Vessel Series



Vessel Design and Build

- Vessel Digital Model & Twin
- Vessel Performance Optimization
- Structural Health Monitoring
- Sensorization (Remote Control / Autonomous Ready)

Energy Management Systems

- Wireless Power Charging
- Battery Pack Optimization for modular hot-swapped batteries
- Light Weight modular cell enclosures
- AI Engine Model for Battery Remaining Useful Life (RUL) prediction

Vessel's System Technologies

- FBG (Fibre Bragg Grating) Sensors
- Additive Manufacturing for MRO
- AI Engine Model for Predictive Maintenance

Coastal Traffic and Safety Management

- Mobile Coastal Platform – Safe Mooring system (Interaction MCP-Vessels during STS)
- Mobile Coastal Platform - Strategic Positioning with MetOcean and Marine Traffic Data

Thank You

PaxOcean Group

www.paxocean.com

Corporate Office : No. 1 Kim Seng Promenade #07-02
Singapore 237994

Tel : +65 6737 7300

Email : marketing@paxocean.com