

Corporate Presentation

Q2 Y2023



PaxOcean

Our Parentage

PaxOcean



KUOK GROUP

Properties

KERRY PROPERTIES



SHANG
PROPERTIES

Logistics



Kerry Logistics
Network

Hospitality



SHANGRI-LA GROUP

Food & Agribusiness



Others



Kuok (Singapore) Limited

Maritime

PaxOcean



Excellence Through Safety



Digital Infrastructure



K2 DATA CENTRES

Property



ALLGREEN

Our Mission, Vision & Values



- We aspire to become a world-class service provider in the construction, conversion and repair of marine and offshore assets.



- We aim to develop a committed, competent and cohesive workforce, centred around our core values.

➤ GRATITUDE

We are thankful for the challenges we go through, that make us stronger, wiser and humble as a team.
We show our appreciation to others for their support and contribution to our success.

➤ INTEGRITY

We relate to others with sincerity, honesty, truthfulness and benevolence.
We treat everyone fairly regardless of seniority and background.

➤ EFFORT

We are committed to the organisation and work diligently to achieve success.
We stay resilient, hold ourselves accountable and always give of our best.

➤ UNITY

We embrace differing views to reach the best way forward.
We strive together for a common purpose and execute collectively.

➤ COMPASSION

We care and look after the well being of our people and the community.
We take responsibility for the safety and well-being of all.

Core Activities



Shipbuilding & Offshore Fabrication



Successfully built over 750 vessels spanning across a wide range of major vessel classes. Our cutting-edge facilities and extensive expertise enable us to provide turnkey solution with innovation at the forefront.

Conversions & Retrofits



Strong track record of successfully delivering innovative and cost-effective fast-track conversions. Our expertise include providing turnkey solutions for the installation of Ballast Water Treatment Systems and Scrubber systems on board vessels.

Repairs & Maintenance



Offering proactive and holistic solutions, ranging from routine maintenance to the most complex endeavors. We provide comprehensive solutions tailored to the specific needs and challenges of each undertaking.

Decommissioning & Green Recycling



In accordance with European Union Ship Recycling Regulations and the Hong Kong International Convention, our ship recycling facility in Batam demonstrate our commitment to safe and environmentally sound practices at the end of a ship's life.

Integrated Solutions



Dedicated to supporting the energy transition and promoting sustainable development, PaxOcean is committed to contributing to a greener and more sustainable future.

Key Milestones

PaxOcean



PaxOcean Zhoushan started operation and welcomed first Jack Up COSL 942 for drydocking

2011



Delivery of 26,000m³ FSRU in PaxOcean Zhoushan

2014

Rebranding of all shipyards as the PaxOcean Group

PaxOcean

2018

PaxOcean Holdings acquired 100% shares of DDW PaxOcean Asia and renamed as PaxOcean International

2019



Won contract to construct a self-elevating platform with 1,600T lift for offshore wind

2020

Relinquished of Zhuhai Yard as part of strategic business plan

Installation of Rotor Sails in Zhoushan Yard (First Installation in China)



2021



Launch of the Coastal Sustainability Alliance to build next-generation maritime ecosystem

2022

Signed a technical service agreement with GTT, to expand our repair scope by providing membrane tank maintenance and servicing of LNGC in Batam

GTT
Technology for a sustainable world

2023

PaxOcean acquired first yard through a JV in Guangdong



2007

PaxOcean Group of Shipyards

PaxOcean



Tuas, Singapore
Total Area: 110,000m²



Zhoushan, China
Total Area: 800,000m²



Pertama Batam
Total Area: 272,000m²



Graha Batam
Total Area: 495,000m²



Nanindah Batam
Total Area: 546,000m²

PaxOcean Group of Shipyards



Tuas, Singapore

Total Area: 110,000 m²

Docking up to Handymax-Sized
Afloat repairs up to Panamax-Sized

Dock	Length	Width	TLC
No. 1	122 M	22 M	3,400
No. 2	195 M	34 M	16,000
No. 3	187 M	36 M	16,000



Zhoushan, China

Total Area: 800,000 m²

Dock	Length	Width
Central	400 M	106 M
West	380 M	80 M

PaxOcean Group of Shipyards



Pertama, Batam

Total Area: 272,000 m²

Dock	Length	Width	TLC
Dock V	235 M	40 M	22,000
Dock 6	285M	48.5M	35,000
Dock 8	300 M	59 M	82,000

Docking up to Capesized Vessels Afloat repairs up to VLCC-Sized



Graha, Batam

Total Area: 495,000 m²

Building Berths	3 nos. 80 M x 80 M 2 nos. 170 M x 50 M
Berth	455 M
Equipment	Cranes up to 1,250 T SWL



Nanindah, Batam

Total Area: 546,000 m²

Dock	Length	Width	TLC
No. 1	97 M	24 M	3,200
No. 2	186 M	36 M	16,000
Building Berths	2,500 M waterfront with up to 5m water depth		
Working Area	31,900 M ²		
Equipment	Cranes up to 600 T SWL		

PaxOcean Business Centre in Batam

PaxOcean



Officially Opened
26 April 2023

Number of Offices
61

Floor Area
7,218 sqm over 3 storeys

Number of Meeting Rooms
8

Sustainability Feature
Solar Panels 100 kWp

Key Facilities
Collaboration Space
Function Hall
Dark Room
Library
Gallery
Game Room
Toilet with Shower Facilities



New Floating Dock 6 in Pertamina

PaxOcean

Dock 6

285M (L) x 48.5M (W)

35,000 TLC

Operational since March 2023



Newbuilding Track Record

PaxOcean



Vessel Type

FSRU

Dual Fuel LNG Tug

Platform / Offshore Supply Vessel

Cable Laying Vessel

Chemical / Product Tanker

Container Vessel / Carrier

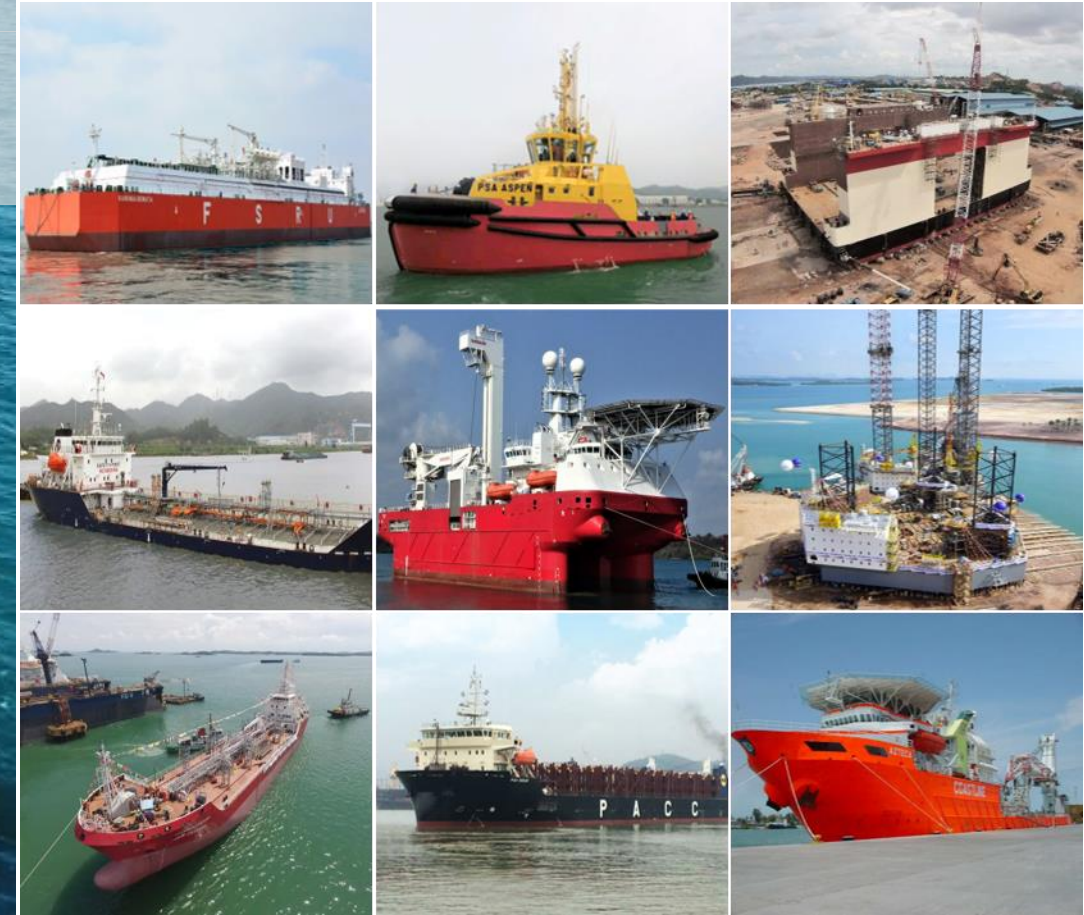
Split Hopper Vessel / Dredger

Caisson / Floating Dock

750 Vessels and Barges

Across major vessel classes, including

15 Jack up Rigs and Liftboats



Conversions Track Record

PaxOcean

Successfully Delivered
65 Conversions



Conversion from Well Intervention vessel
to DP3 Semi Submersible
Accommodation Vessel



Ship Repair Track Record

PaxOcean

Gas Carrier



Chemical/Product Tankers



Bulkers/Container Vessel



OSV/Tug



White Boats



Others



Retrofit Solutions for Scrubber & BWTS



BALLAST WATER MANAGEMENT SYSTEM

- Comprehensive & Cost-Effective Solutions
- Type-approved, IMO & USCG-compliant
- Proven Track Record in Performing BWTS Retrofit for diverse range of vessel types.



15 DAYS SCRUBBER RETROFIT
83,476 DWT Bulk Carrier

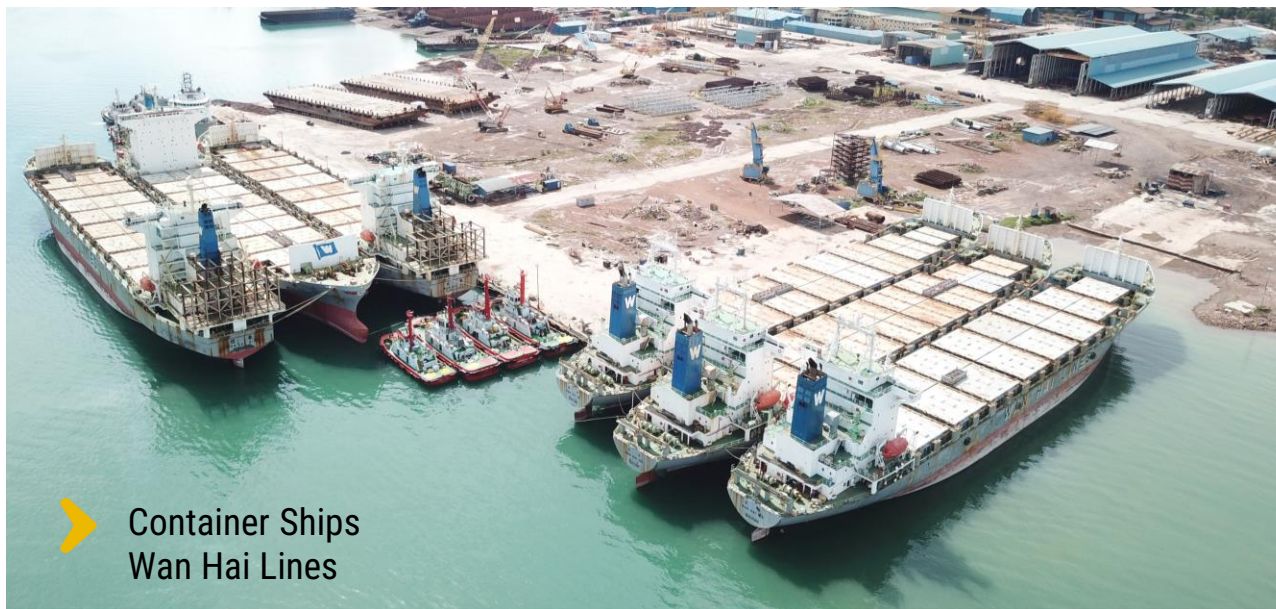
Scope of Work

- 3D Scanning & Vessel Survey
- Basic & Detailed Engineering
- Procurement & Prefabrication
- Project Management
- Installation
- Commissioning/Testing

Green Ship Recycling – Track Record



➤ 22,000 Ton Semi Sub Drilling Rig
"Noble Dave Beard"



➤ Container Ships
Wan Hai Lines



➤ 4,000 Ton
Mobile Offshore Production Unit "EP 3"



➤ 11,000 Bulk Carrier
"Acacia"



➤ 6,500 Ton
Mobile Offshore Production Unit "EP 4"

Green Ship Recycling - Certification



STATEMENT OF FACT

This is to state that our assessment of the facilities at the PAXOCEAN Shipyard

PT Dok Warisan Pertama
Jl. Brigjen Katamso, Tanjung Uncang,
Batam, Indonesia

indicates that it has the capabilities, and the Ship Repair, Ship Conversion and Ship Recycling Work practices, to comply with the requirements of the following regulations

- MEPC 210 (63) 2012 GUIDELINES FOR SAFE AND ENVIRONMENTALLY SOUND SHIP RECYCLING
- REGULATION (EU) No 1257/2013 OF THE EUROPEAN PARLIAMENT AND OF THE COUNCIL of 20 November 2013 on ship recycling and amending Regulation (EC) No 1013/2006 and Directive 2009/16/EC

Date of Issue: 9th September 2019



WENKUI CAI
Manager

This certificate or report is granted or issued subject to the condition that it is understood and agreed that nothing herein shall be deemed to relieve any designer, manufacturer, seller, supplier, repairer or operator of any warranty, express or implied and ABS Consulting liability shall be limited to the acts and omissions of its employees, agents, and subcontractors. Under no circumstance whatsoever shall ABS Consulting be liable for any injury or damage to any person or property occurring by reason of negligent operation, misuse of or any defect in materials, machinery, equipment or other items other than defective items actually inspected by ABS Consulting and/or liability normally accepted loading standards, or defects reflected in documents reviewed by ABS Consulting and which are covered by this certificate or report.

ABS Consulting (S) Pte Ltd • 438 Alexandra Road, #09-01 Alexandra Point • Singapore 119936
Tel: 65-6279 8933 • Fax: 65-6270 9587 • www.absconsulting.com



STATEMENT OF FACT

This is to state that our assessment of the facilities at the PAXOCEAN Shipyard

P.T. Graha Trisaka Industri
Jl. Brigjen Katamso, Tanjung Uncang,
Batam
Indonesia

Indicates that it has the capabilities, and the Ship Repair, Ship Conversion and Ship Recycling Work practices, to comply with the requirements of the following regulations

- MEPC 210 (63) 2012 GUIDELINES FOR SAFE AND ENVIRONMENTALLY SOUND SHIP RECYCLING
- REGULATION (EU) No 1257/2013 OF THE EUROPEAN PARLIAMENT AND OF THE COUNCIL of 20 November 2013 on ship recycling and amending Regulation (EC) No 1013/2006 and Directive 2009/16/EC

Date of Issue: 16th September 2020



WENKUI CAI
Manager

This certificate or report is granted or issued subject to the condition that it is understood and agreed that nothing herein shall be deemed to relieve any designer, manufacturer, seller, supplier, repairer or operator of any warranty, express or implied and ABS Consulting liability shall be limited to the acts and omissions of its employees, agents, and subcontractors. Under no circumstance whatsoever shall ABS Consulting be liable for any injury or damage to any person or property occurring by reason of negligent operation, misuse of or any defect in materials, machinery, equipment or other items other than defective items actually inspected by ABS Consulting and/or liability normally accepted loading standards, or defects reflected in documents reviewed by ABS Consulting and which are covered by this certificate or report.

ABS Consulting (S) Pte Ltd • 438 Alexandra Road, #09-01 Alexandra Point • Singapore 119936
Tel: 65-6279 8933 • Fax: 65-6270 9587 • www.absconsulting.com



STATEMENT OF FACT

This is to state that our assessment of the facilities at the PAXOCEAN Shipyard

P.T. Nanindah Mutiara Shipyard
Jl. Brigjen Katamso, Tanjung Uncang,
Batam
Indonesia

Indicates that it has the capabilities, and the Ship Repair, Ship Conversion and Ship Recycling Work practices, to comply with the requirements of the following regulations

- MEPC 210 (63) 2012 GUIDELINES FOR SAFE AND ENVIRONMENTALLY SOUND SHIP RECYCLING
- REGULATION (EU) No 1257/2013 OF THE EUROPEAN PARLIAMENT AND OF THE COUNCIL of 20 November 2013 on ship recycling and amending Regulation (EC) No 1013/2006 and Directive 2009/16/EC

Date of Issue: 21st September 2020



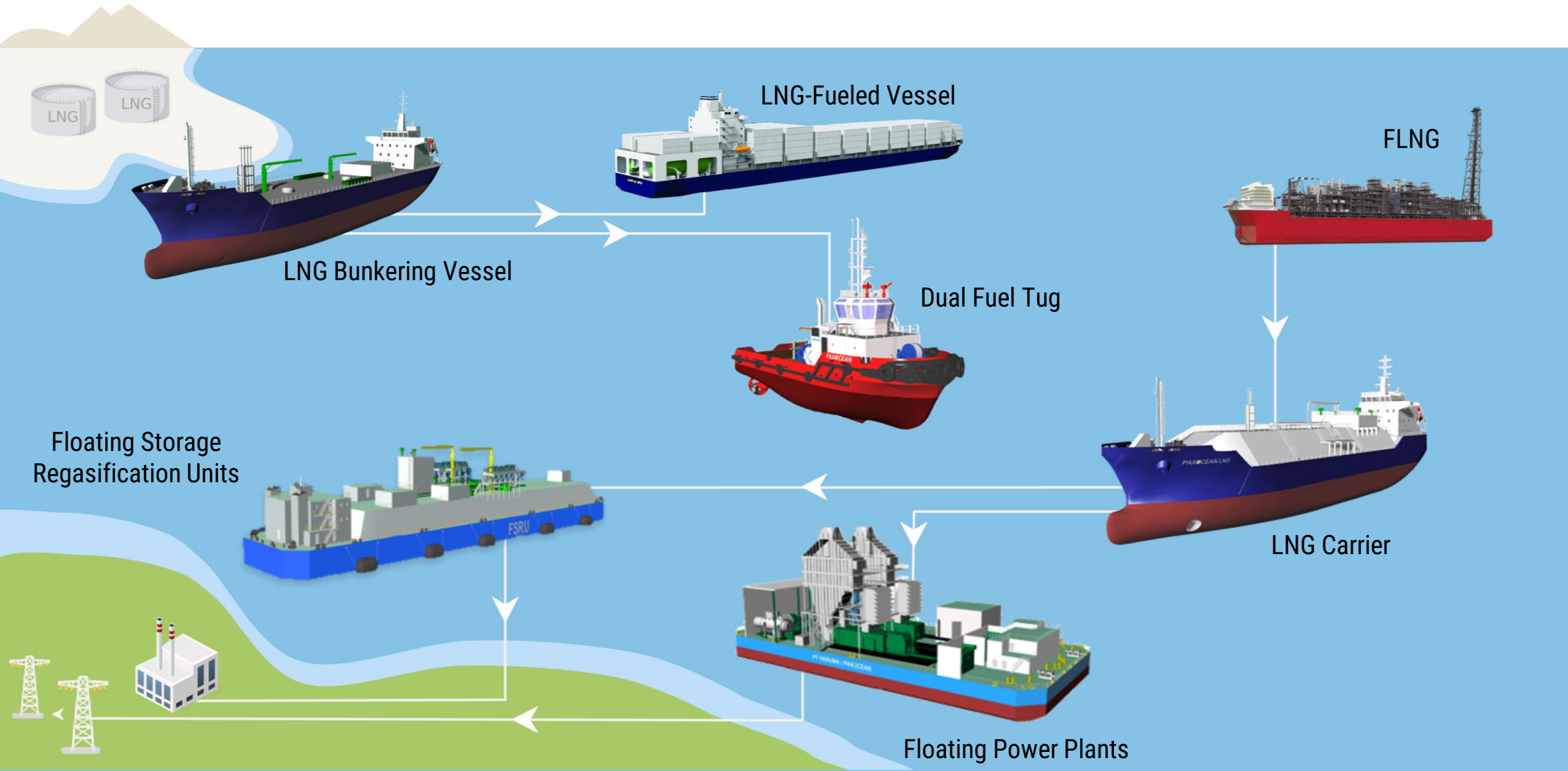
WENKUI CAI
Manager

This certificate or report is granted or issued subject to the condition that it is understood and agreed that nothing herein shall be deemed to relieve any designer, manufacturer, seller, supplier, repairer or operator of any warranty, express or implied and ABS Consulting liability shall be limited to the acts and omissions of its employees, agents, and subcontractors. Under no circumstance whatsoever shall ABS Consulting be liable for any injury or damage to any person or property occurring by reason of negligent operation, misuse of or any defect in materials, machinery, equipment or other items other than defective items actually inspected by ABS Consulting and/or liability normally accepted loading standards, or defects reflected in documents reviewed by ABS Consulting and which are covered by this certificate or report.

ABS Consulting (S) Pte Ltd • 438 Alexandra Road, #09-01 Alexandra Point • Singapore 119936
Tel: 65-6279 8933 • Fax: 65-6270 9587 • www.absconsulting.com

LNG Supply Chain

PaxOcean



Clean Energy Solutions - LNG

Design, develop and integrate solutions across the value chain

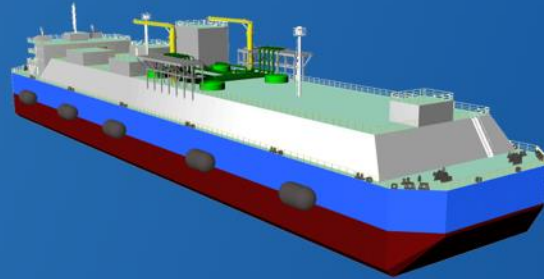
PaxOcean



GAS TO POWER

Floating Power Barge

Economic and environment friendly power barges that provide fast and direct supply of electricity to remote communities.



LIQUID TO GAS

Floating, Storage, Regasification Unit



Built to PaxOcean's design, the 26,000m³ FSRU is currently operating in Benoa, Bali



TRANSPORTATION

LNG Bunker/Carrier

Our designs for carrier/bunker vessels range from 1,500m³ to 30,000m³ capacity, able to provide flexible and optimal LNG transport options.



GAS AS FUEL

Dual-Fuel LNG Tug



Delivered Indonesia's first Dual-Fuel LNG Tug, built to PaxOcean's design.

Renewable Energy Solutions – Offshore Wind

Heavy Lift Crane Vessel

Offshore transport and installation



Turbine Installation Vessel

Offshore transport and installation



Cable Laying Vessel

Offshore wind cable laying



Service Operation Vessels (SOVs)

Offshore support and maintenance



Coastal Sustainability Solution

Key targets and benefits of creating Singapore's Coastal Sustainability Ecosystem

by Coastal Sustainability Alliance (CSA)



Green Supply Chain Resilience
Build comprehensive supply chain, charging infrastructure and capabilities with SMEs.



PXO Vessel and Platform Series
Design, build and deploy PXO vessels by 2025. Vessels to achieve up to 50% reduction in carbon emissions.



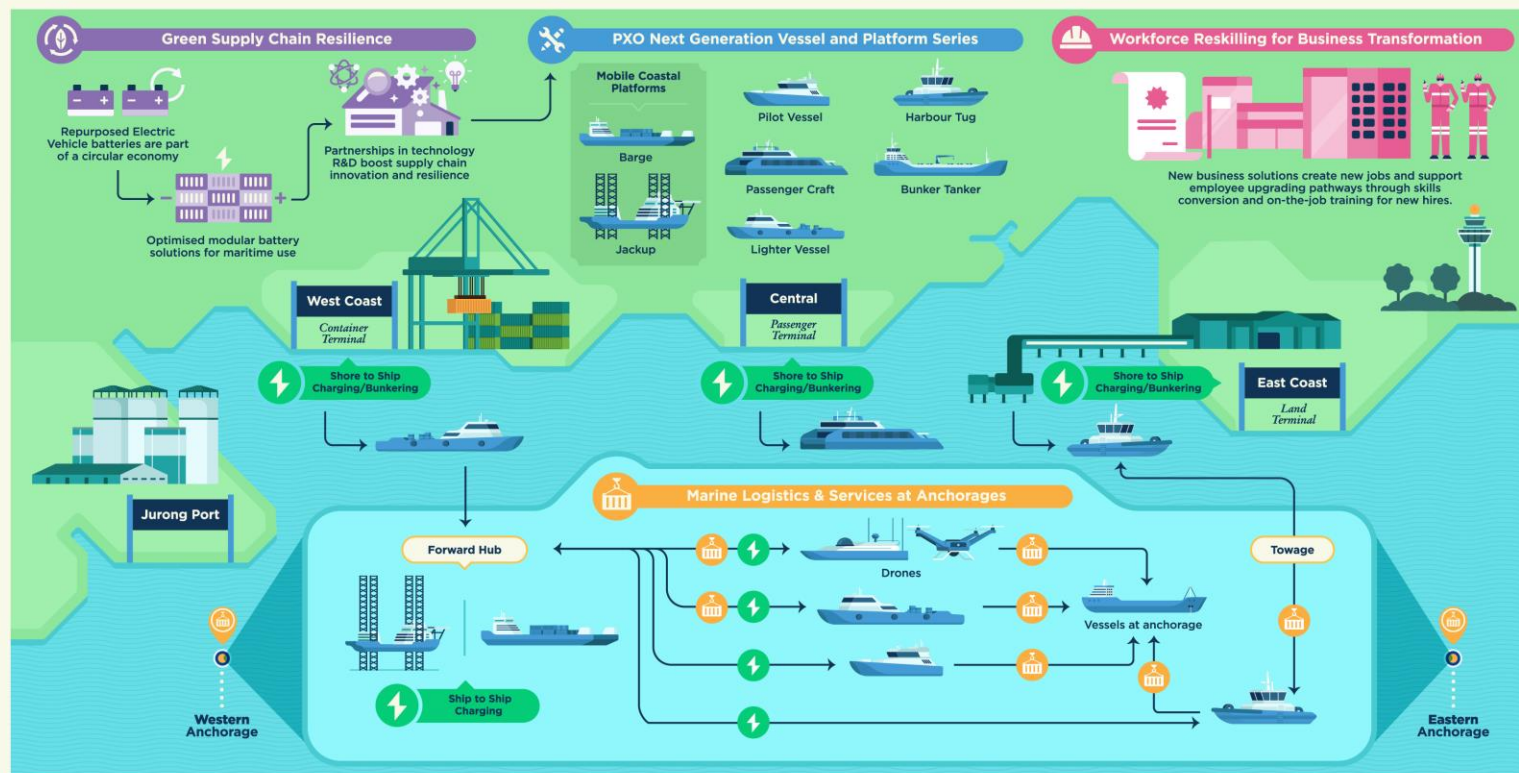
Electric Charging
Charge PXO vessels through a network of shore and mobile e-charging points.



Workforce Reskilling for Business Transformation
Reskill, redeploy employees in enhanced job roles to support new business growth areas.



Marine Logistics & Services
Reduce marine traffic by 20% through fleet optimisation, floating platforms in anchorage and drones for last-mile deliveries.



CSA Members:

The **Coastal Sustainability Alliance (CSA)** aims to build a next-generation maritime ecosystem to decarbonise, electrify and transform Singapore's maritime industry towards a circular economy. The ecosystem comprises electric vessels, shore and marine charging platforms, battery repurposing, renewable energy sources, energy-efficient logistics and innovative engineering solutions for future growth opportunities.



PX0 Vessel Series



Vessel Design and Build

- Vessel Digital Model & Twin
- Vessel Performance Optimization
- Structural Health Monitoring
- Sensorization (Remote Control / Autonomous Ready)

Energy Management Systems

- Wireless Power Charging
- Battery Pack Optimization for modular hot-swapped batteries
- Light Weight modular cell enclosures
- AI Engine Model for Battery Remaining Useful Life (RUL) prediction

Vessel's System Technologies

- FBG (Fibre Bragg Grating) Sensors
- Additive Manufacturing for MRO
- AI Engine Model for Predictive Maintenance

Coastal Traffic and Safety Management

- Mobile Coastal Platform – Safe Mooring system (Interaction MCP-Vessels during STS)
- Mobile Coastal Platform - Strategic Positioning with MetOcean and Marine Traffic Data

Thank You

PaxOcean Group

www.paxocean.com

Corporate Office : No. 1 Kim Seng Promenade #07-02
Singapore 237994

Tel : +65 6737 7300

Email : marketing@paxocean.com