

# PAXOCEAN GROUP

---

Corporate Presentation Q2 2024



## KUOK GROUP SINGAPORE

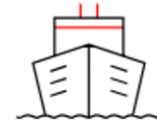
**Kuok Group Singapore** (KGSg) is an investment holding company with interests in maritime activities, property and equity investments in various listed companies.

**KGSg** was founded in **1948** and has since grown into a Group with a **multi-billion asset base**. KGSg shares common heritage with two other holding companies, namely Kerry Holdings Limited in Hong Kong and Kuok Brothers in Malaysia, in that they were all founded by the Kuok family.

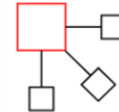
The subsidiaries under KGSg include but are not limited to **PACC Offshore Services Holdings (POSH)**, **Pacific Carriers Limited (PCL)**, **PaxOcean Group**, **Pacific Workboats (PWPL)**, **McPEC Marine & Offshore Engineering Pte Ltd (McPEC)**, **Allgreen Properties**, and **K2 Data Centres**.

The Group continues to build on its legacy and bring entrepreneurial spirit, heart and ambition to businesses in Asia as it innovates for the future.

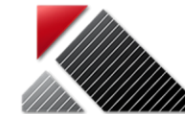
**Kuok Singapore** operates multiple businesses across **three major sectors**



### MARITIME



### DIGITAL INFRASTRUCTURE

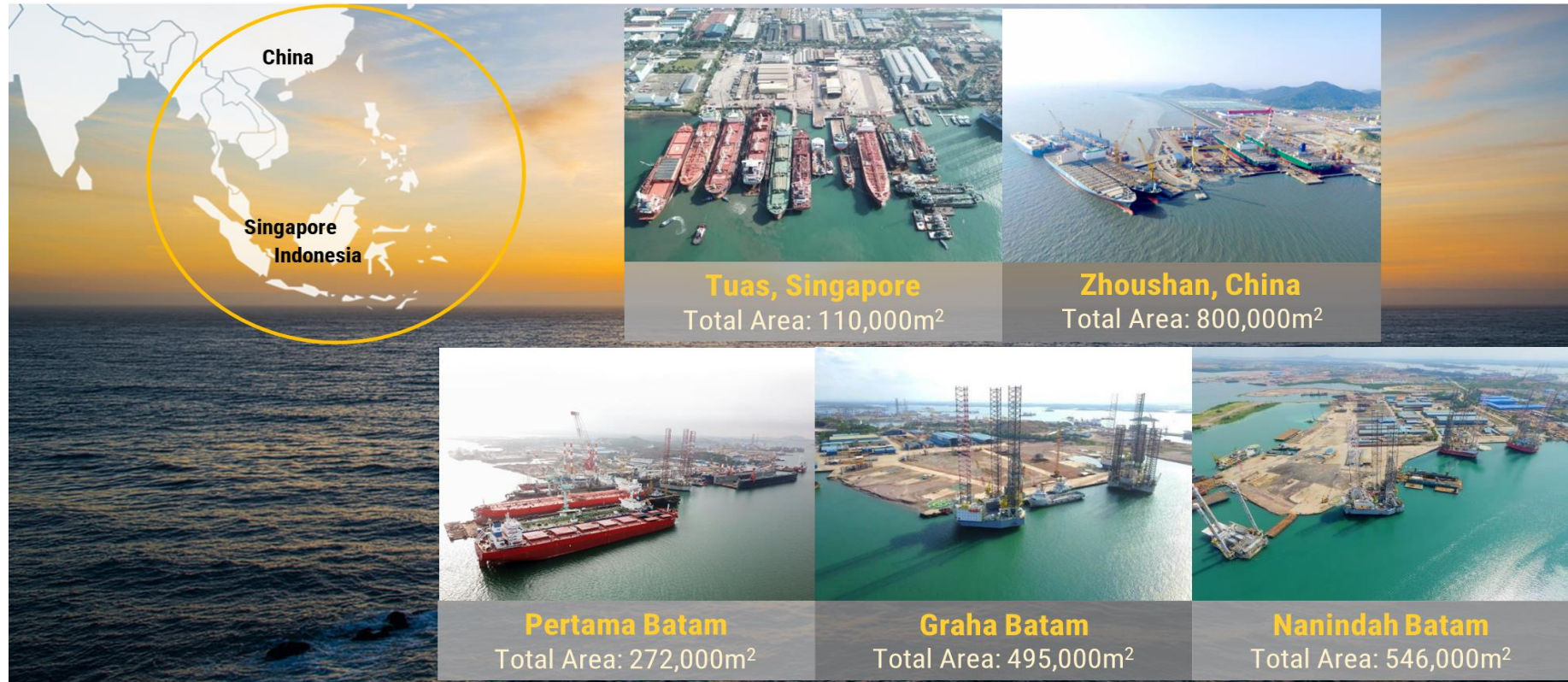


K2 DATA CENTRES



### REAL ESTATE





The PaxOcean Group owns and operate five shipyards situated in Singapore, China and Indonesia. The Group also operates an MRO (Maintenance, Repair and Operations) facility in the Kingdom of Saudi Arabia.

These shipyards and facility offers comprehensive engineering services that support the complete life cycle of maritime and offshore assets. Leveraging our core competencies and technical expertise, we provide an integrated suite of services, encompassing newbuilding, module fabrication, conversions & retrofits, repair and maintenance and green recycling.

# MISSION, VISION AND VALUES

➤ We aspire to become a world-class service provider in the construction, conversion and repair of marine and offshore assets.

➤ We aim to develop a committed, competent and cohesive workforce, centred around our core values.



## ➤ GRATITUDE

We are thankful for the challenges we go through, that make us stronger, wiser and humble as a team.

We show our appreciation to others for their support and contribution to our success.

## ➤ INTEGRITY

We relate to others with sincerity, honesty, truthfulness and benevolence.

We treat everyone fairly regardless of seniority and background.

## ➤ EFFORT

We are committed to the organisation and work diligently to achieve success.

We stay resilient, hold ourselves accountable and always give of our best.

## ➤ UNITY

We embrace differing views to reach the best way forward.

We strive together for a common purpose and execute collectively.

## ➤ COMPASSION

We care and look after the well being of our people and the community.

We take responsibility for the safety and well-being of all.



## ■ Health, Safety and Environmental (HSE) Policy

- PaxOcean prioritizes Health, Safety, and Environmental (HSE) protection. All employees are expected to comply with all applicable laws and regulations, and to strictly adhere to our established HSE protocols.
- ISO 9001, ISO 14001, ISO 45001 and ISO 50000 accreditation
- 4 primary focus areas:
  - Empower and educate employees on maintaining a safe workplace, identify hazards and control risk
  - Encourage reporting of unsafe condition
  - Promote conservation efforts and proactive environmental protection
  - Engage employees in HSE planning and foster strong, sustainable safety culture

## ■ Safety as a value and a culture

- Clear commitment to safety by management
- Establish effective communication channels
- Workforce participation and ownership of safety problems and solutions
- Standardise and enhance procedures and reporting tools (Novade app)



## Shipbuilding & Offshore Fabrication



Successfully delivered over 750 vessels across a diverse range of vessel classes. Our state-of-the-art facilities and unmatched expertise allow us to offer comprehensive, technology-driven turnkey solutions.

- Tankers and other Commercial Vessels
- Offshore Support Vessels / construction Vessels
- Offshore Wind Installation Vessels
- Modules & E-Houses

## Conversions & Retrofits



Extensive experience in executing innovative and cost-efficient fast-track conversions and retrofit projects.

- Floating Production Storage & Offloading Units
- Floating Storage & Offloading Units
- Various Vessel Conversions and Upgrades
- Sox Scrubber Retrofits
- Ballast Water Treatment

## Repairs & Maintenance



Proactive and holistic approach to client needs, offering a comprehensive suite of solutions, from routine maintenance to complex challenges, ensuring optimal outcomes through tailored solutions.

- LNG / LPG Carriers
- Crude Oil Tankers
- Container Carriers
- Offshore Support Vessels
- Dredgers
- Live-stock Carriers

## Decommissioning & Green Recycling



Our ship recycling facility adheres to the rigorous international recycling regulations, reflecting our commitment to sustainable and environmentally responsible end-of-life vessel management.

- Semi-Submersibles
- Jack-Ups
- Topsides
- Port Cranes
- Mobile Offshore Production Units
- Bulk Carriers

## Integrated Solutions



Fueling the energy transition and sustainable development, PaxOcean invest in research and development to drive innovation for a greener future.

- LNG Carriers
- LNG Bunkering Vessel
- Floating Storage Regasification Unit
- Multi-fuel Bunkering Vessel
- Service Operation vessel (SOV)
- Electric Tugboats
- Dual-Fuel Azimuth Stern Drive Tugboat
- Power Generation Barge
- FLNG
- Offshore Support Vessels



# OUR JOURNEY

PaxOcean



PaxOcean Zhoushan started operation and welcomed first Jack Up COSL 942 for drydocking



Delivery of 26,000m³ FSRU in PaxOcean Zhoushan



Installation of Rotor Sails in Zhoushan Yard  
(First Installation in China)



Delivery of self-elevating platform with 1,600T lift for offshore wind

2007

PaxOcean acquired first shipyard in Guangdong, China.



2011

Rebranding of all shipyards as **PaxOcean Group**

PaxOcean

2014

2018

PaxOcean Holdings acquired 100% shares of DDW PaxOcean Asia and renamed as PaxOcean International

2019

2021

Launch of the Coastal Sustainability Alliance to build next-generation maritime ecosystem



2022

2023

Signed a technical service agreement with GTT, to expand our repair scope by providing membrane tank maintenance and servicing of LNGC in Batam

GTT  
Technology for a sustainable world



# PAXOCEAN GROUP OF SHIPYARDS & FACILITY

PaxOcean



**PAXOCEAN Tuas, Singapore**

Total Area: 110,000m<sup>2</sup>



**PAXOCEAN Batam, Indonesia**

Total Area: 1,313,000m<sup>2</sup>



**PAXOCEAN Zhoushan, China**

Total Area: 800,000m<sup>2</sup>



**PAXOCEAN Jubail, Kingdom of Saudi Arabia**

Total Area: 600m<sup>2</sup>

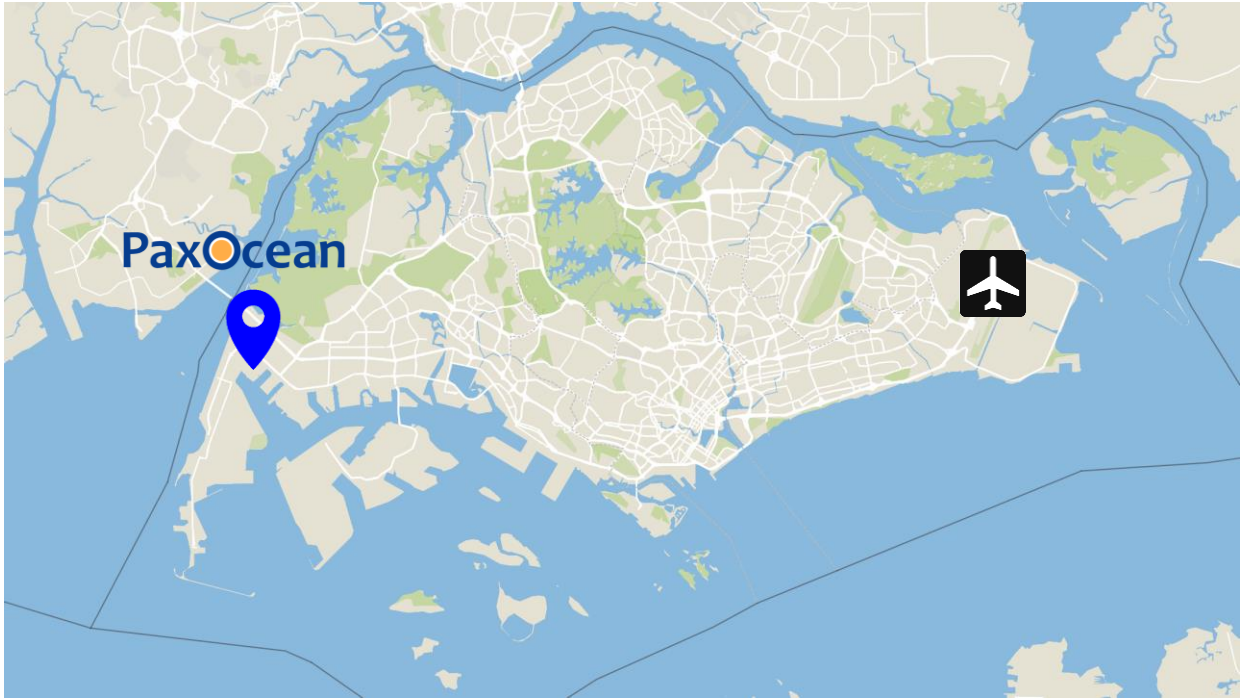




**Total Area: 110,000 m<sup>2</sup>**

Docking up to Handymax-Sized  
Afloat repairs up to Panamax-Sized

Dock	Length	Width	TLC
No. 1	122 M	22 M	3,400
No. 2	195 M	34 M	16,000
No. 3	187 M	36 M	16,000

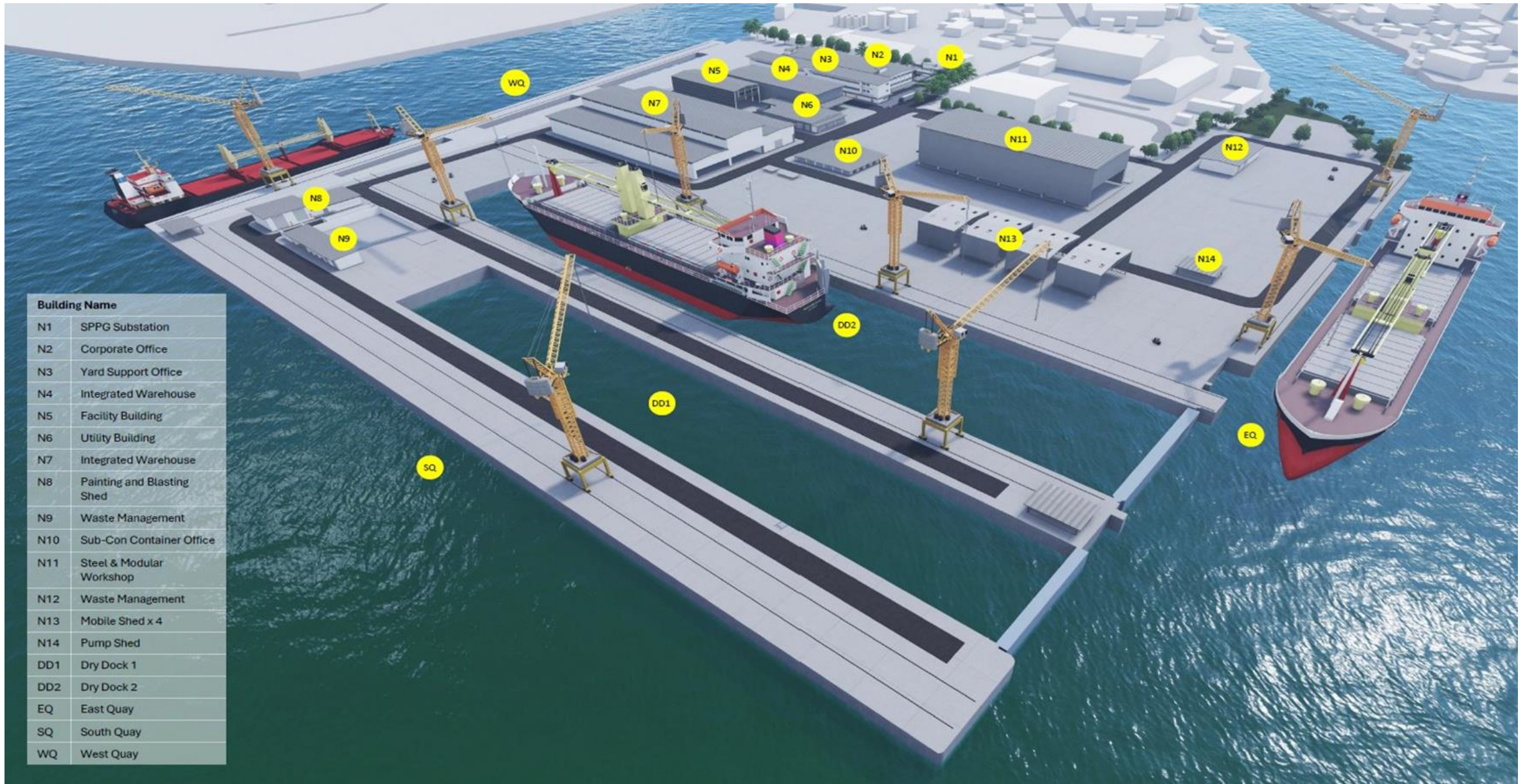


PaxOcean Tuas shipyard is strategically located near major shipping lanes at Singapore's western anchorage.

With over 40 years of proven track record, we have established strong reputation and expertise in newbuilding, conversion and repair across a wide range of vessel types.



# PAXOCEAN SINGAPORE NEW YARD DEVELOPMENT



## Building Name

N1	SPPG Substation
N2	Corporate Office
N3	Yard Support Office
N4	Integrated Warehouse
N5	Facility Building
N6	Utility Building
N7	Integrated Warehouse
N8	Painting and Blasting Shed
N9	Waste Management
N10	Sub-Con Container Office
N11	Steel & Modular Workshop
N12	Waste Management
N13	Mobile Shed x 4
N14	Pump Shed
DD1	Dry Dock 1
DD2	Dry Dock 2
EQ	East Quay
SQ	South Quay
WQ	West Quay





PaxOcean Zhoushan Yard is situated on Changbai Island, in the northwest region of Zhoushan City, Zhejiang Province. Established in 2011, the yard features two large graving docks, a jetty, and supporting infrastructure that includes a 900-ton gantry crane. It can accommodate large vessels, including VLCCs, VLOCs, and large container ships up to 16,000 TEUs



Zhoushan, China

**Total Area: 800,000 m<sup>2</sup>**

Dock	Length	Width
Central	400 M	106 M
West	380 M	80 M



# PAXOCEAN ZHOUSHAN YARD EXPANSION DEVELOPMENT

## Heavy Load Jetty and Covered Hull Fabrication Workshop

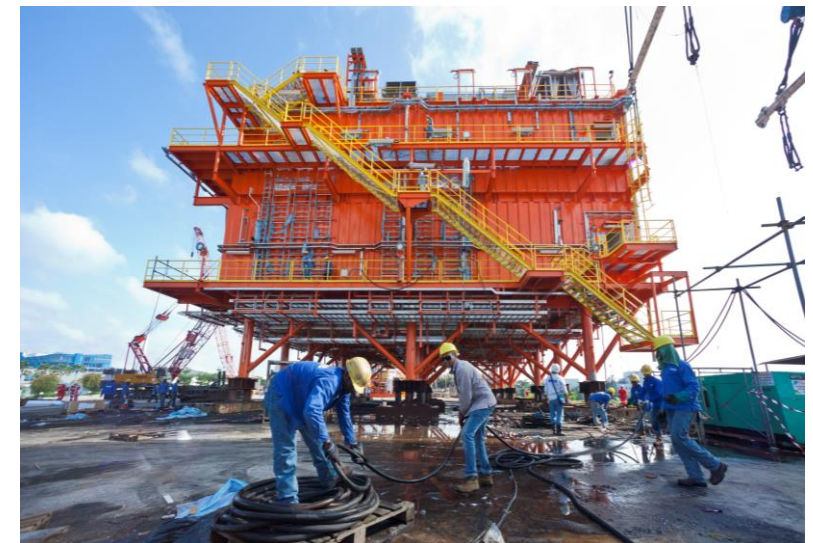


## Extension of Berthing Jetty



- Over 89,000sqm hull fabrication workshops
- Construction commence from January 2024, operational from 4Q 2024
- Solar panels for workshops' rooftops will be incorporated





In Indonesia, the combination of our three yards in Batam are within close proximity of each other, enabling us to fully optimise our resources and yard facilities with greater flexibility and cater to the increasingly complex needs of our global customers.

PaxOcean Batam in the first Indonesia yard approved by GTT to provide membrane tank maintenance and servicing of LNG carriers.



Pertama, Batam

Total Area: 272,000 m<sup>2</sup>

Dock	Length	Width	TLC
Dock V	235 M	40 M	22,000
Dock 6	285M	48.5M	35,000
Dock 8	300 M	59 M	82,000

Docking up to Capesized Vessels Afloat repairs up to VLCC-Sized



Graha, Batam

Total Area: 495,000 m<sup>2</sup>

Building Berths	3 nos. 80 M x 80 M 2 nos. 170 M x 50 M
Berth	455 M
Equipment	Cranes up to 1,250 T SWL



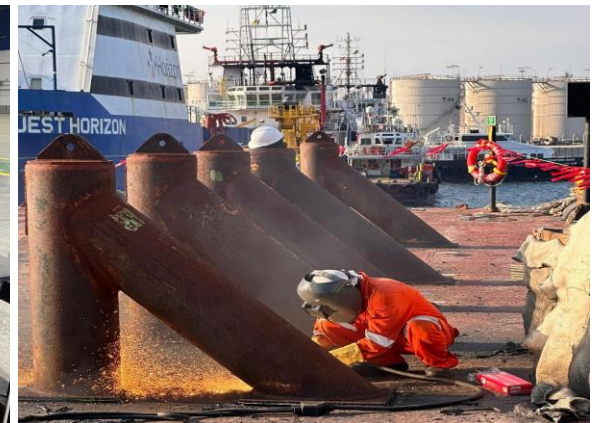
Nanindah, Batam

Total Area: 546,000 m<sup>2</sup>

Dock	Length	Width	TLC
No. 1	97 M	24 M	3,200
No. 2	186 M	36 M	16,000
Building Berths	2,500 M waterfront with up to 5m water depth		
Working Area	31,900 M <sup>2</sup>		
Equipment	Cranes up to 600 T SWL		



- Located near to Jubail marine base.
- Our expertise encompasses the full spectrum of marine and offshore engineering solutions, from fabrication, conversions to comprehensive repair services.
- Optimizing vessel uptime, we provide comprehensive repair and maintenance services, both onsite and afloat.



The background features a large, abstract graphic composed of numerous small dots. A dense, light blue pattern of dots forms a broad, sweeping shape that resembles a stylized wave or a large, open letter 'P', extending from the top left towards the right side of the frame. Below this blue pattern, there is a vertical column of larger, solid orange dots. This column is positioned slightly to the left of the center and extends downwards, partially overlapping the bottom of the blue pattern. The overall effect is a modern, digital aesthetic.

# **PAXOCEAN INTEGRATED SOLUTIONS**



## Heavy Lift Crane Vessel

Offshore transport and installation



## Turbine Installation Vessel

Offshore transport and installation



## Cable Laying Vessel

Offshore wind cable laying



## Service Operation Vessels (SOVs)

Offshore support and maintenance





# CLEAN ENERGY SOLUTIONS - LNG

DESIGN, DEVELOP AND INTEGRATE SOLUTIONS ACROSS THE VALUE CHAIN

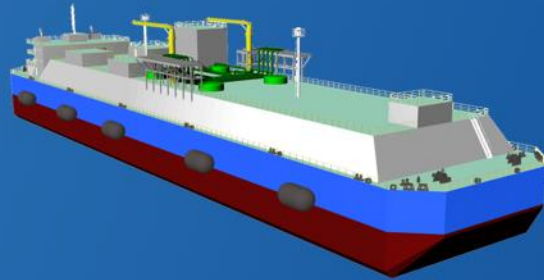
PaxOcean



## GAS TO POWER

Floating Power Barge

Economic and environment friendly power barges that provide fast and direct supply of electricity to remote communities.



## LIQUID TO GAS

Floating, Storage, Regasification Unit



Built to PaxOcean's design, the 26,000m<sup>3</sup> FSRU is currently operating in Benoa, Bali



## TRANSPORTATION

LNG Bunker/Carrier

Our designs for carrier/bunker vessels range from 1,500m<sup>3</sup> to 30,000m<sup>3</sup> capacity, able to provide flexible and optimal LNG transport options.



## GAS AS FUEL

Dual-Fuel LNG Tug



Delivered Indonesia's first Dual-Fuel LNG Tug, built to PaxOcean's design.

# COASTAL SUSTAINABILITY SOLUTION

The Coastal Sustainability Alliance aims to build a next-generation maritime ecosystem to decarbonise, electrify and transform Singapore's maritime industry towards a circular economy.

The ecosystem comprises electric vessels, shore and marine charging platforms, battery repurposing, renewable energy sources, energy-efficient logistics and innovative engineering solutions for future growth opportunities.

## Key targets and benefits of creating Singapore's Coastal Sustainability Ecosystem

by Coastal Sustainability Alliance (CSA)



**Green Supply Chain Resilience**  
Build comprehensive supply chain, charging infrastructure and capabilities with SMEs.



**PXO Vessel and Platform Series**  
Design, build and deploy 10 PXO vessels by 2025. Vessels to achieve up to 50% reduction in carbon emissions.



**Electric Charging**  
Charge PXO vessels through a network of shore and mobile e-charging points.



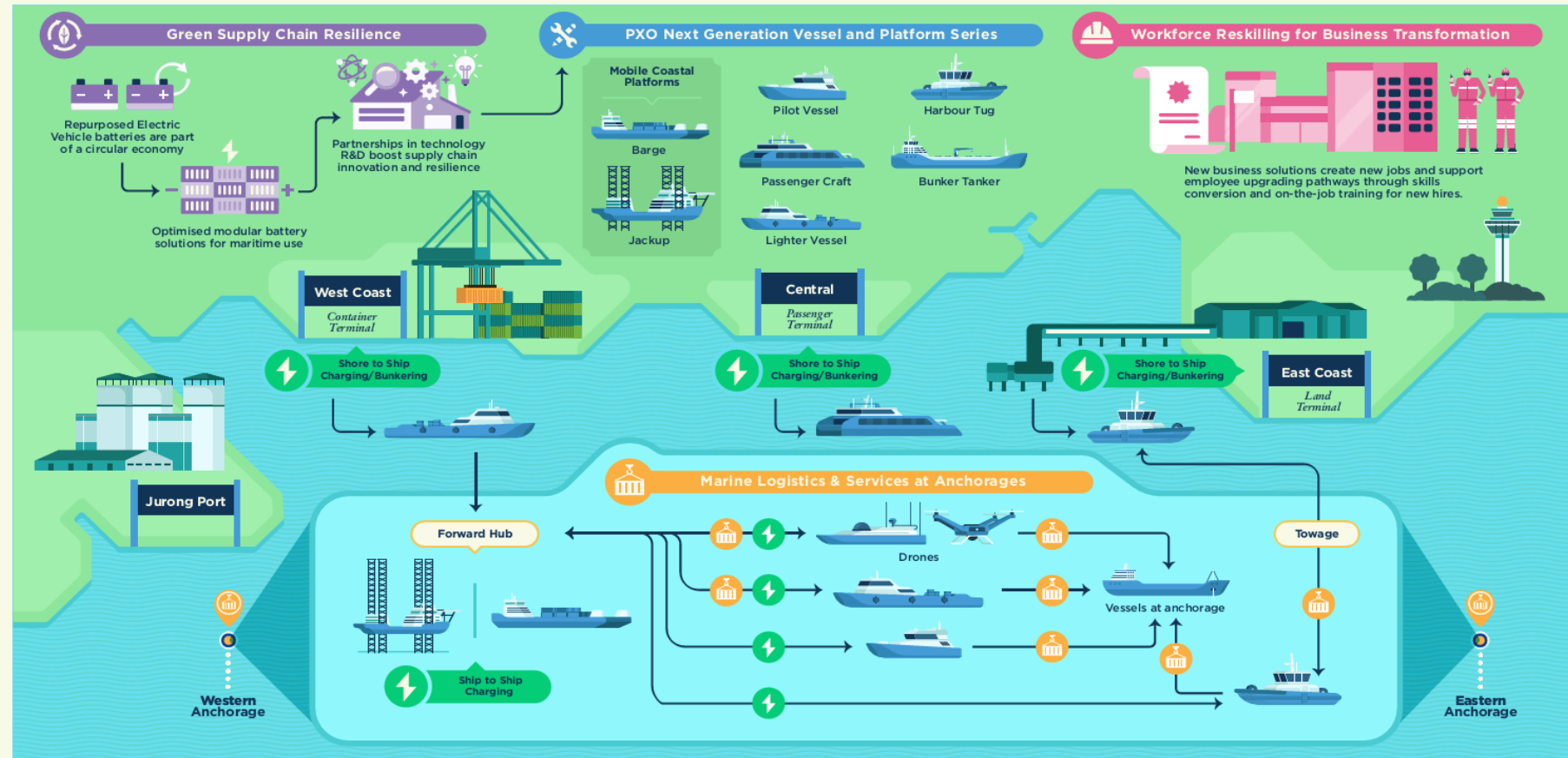
**Workforce Reskilling for Business Transformation**

Reskill, redeploy employees in enhanced job roles to support new business growth areas.



**Marine Logistics & Services**

Reduce marine traffic by 20% through fleet optimisation, floating platforms in anchorage and drones for last-mile deliveries.







## Vessel Design and Build

- › Vessel Digital Model & Twin
- › Vessel Performance Optimization
- › Structural Health Monitoring
- › Sensorization (Remote Control / Autonomous Ready)

## Energy Management Systems

- › Wireless Power Charging
- › Battery Pack Optimization for modular hot-swapped batteries
- › Light Weight modular cell enclosures
- › AI Engine Model for Battery Remaining Useful Life (RUL) prediction

## Vessel's System Technologies

- › FBG (Fibre Bragg Grating) Sensors
- › Additive Manufacturing for MRO
- › AI Engine Model for Predictive Maintenance

## Coastal Traffic and Safety Management

- › Mobile Coastal Platform – Safe Mooring system (Interaction MCP-Vessels during STS)
- › Mobile Coastal Platform - Strategic Positioning with MetOcean and Marine Traffic Data



The background features a large, abstract graphic composed of numerous small dots. The dots are arranged in a way that suggests a stylized, flowing shape, possibly representing a track or a landscape feature. The dots are colored in two main shades: a light blue and a light orange. The blue dots form the upper and outer portions of the shape, while the orange dots form the lower and inner portions. The overall effect is a modern, minimalist design.

# **PAXOCEAN TRACK RECORD**

Vessel Type
Wind Turbine Installation Vessel
FSRU
Dual Fuel LNG Tug
Platform / Offshore Supply Vessel
Cable Laying Vessel
Chemical /Product Tanker
Container Vessel / Carrier
Split Hopper Vessel / Dredger
Caisson / Floating Dock

**750** Vessels and Barges

Across major vessel classes, including

**15** Jack up Rigs and Liftboats





# TRACK RECORD - CONVERSIONS

PaxOcean

Successfully Delivered

58 Conversions



Conversion from Well Intervention vessel  
to DP3 Semi-Submersible  
Accommodation Vessel





# TRACK RECORD - SHIP REPAIR

PaxOcean

Gas Carrier



Chemical/Product Tankers



Bulkers/Container Vessel



OSV/Tug



White Boats



Others





## BALLAST WATER MANAGEMENT SYSTEM

- Comprehensive & Cost-Effective Solutions
- Type-approved, IMO & USCG-compliant
- Proven Track Record in Performing BWTS Retrofit for diverse range of vessel types.

15 DAYS SCRUBBER RETROFIT  
83,476 DWT Bulk Carrier

### Scope of Work

- 3D Scanning & Vessel Survey
- Basic & Detailed Engineering
- Procurement & Prefabrication
- Project Management
- Installation
- Commissioning/Testing





# TRACK RECORD - GREEN SHIP RECYCLING



◀ 5 units Container Ships

11,000 Bulk Carrier  
"Acacia" ▶



◀ 22,000 Ton Semi Sub Drilling Rig  
"Noble Dave Beard"

6,500 Ton ▶  
Mobile Offshore Production Unit  
"EP 4"





# OUR CUSTOMERS

PaxOcean





# Thank You

## PaxOcean Group

Corporate Office : No. 1 Kim Seng Promenade #07-02  
Singapore 237994

Tel : +65 6737 7300

Email : [marketing@paxocean.com](mailto:marketing@paxocean.com)

[www.paxocean.com](http://www.paxocean.com)